

Datasheet for ABIN2784854

**anti-PIM2 antibody (Middle Region)**[Go to Product page](#)**2** Images

## Overview

Quantity:	100 µL
Target:	PIM2
Binding Specificity:	Middle Region
Reactivity:	Human, Mouse, Rat, Cow, Dog, Guinea Pig, Horse, Rabbit, Sheep, Zebrafish (Danio rerio)
Host:	Rabbit
Clonality:	Polyclonal
Conjugate:	This PIM2 antibody is un-conjugated
Application:	Western Blotting (WB)

## Product Details

Immunogen:	The immunogen is a synthetic peptide directed towards the middle region of human PIM2
Sequence:	LRRGCAKLID FGSGALLHDE PYTDFDGTRV YSPPEWISRH QYHALPATVW
Predicted Reactivity:	Cow: 100%, Dog: 100%, Guinea Pig: 100%, Horse: 100%, Human: 100%, Mouse: 100%, Rabbit: 100%, Rat: 100%, Sheep: 79%, Zebrafish: 79%
Characteristics:	This is a rabbit polyclonal antibody against PIM2. It was validated on Western Blot.
Purification:	Affinity Purified

## Target Details

Target:	PIM2
Alternative Name:	PIM2 ( <a href="#">PIM2 Products</a> )

## Target Details

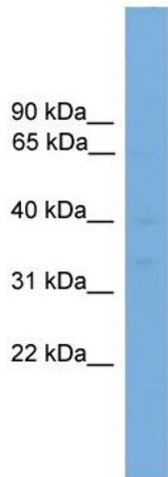
Background:	<p>This gene encodes a protooncogene that acts as a serine/threonine protein kinase. Studies determined the encoded protein functions to prevent apoptosis and to promote cell survival.</p> <p>Alias Symbols: -</p> <p>Protein Interaction Partner: ZNF821, HSP90AA1, ATXN1, UBC, GSK3B, IKBKG, CUTC, NDUFB8, FBXO18, RPL21, SOCS1, BAD, HNRNPH3,</p> <p>Protein Size: 311</p>
Molecular Weight:	34 kDa
Gene ID:	11040
NCBI Accession:	<a href="#">NM_006875</a> , <a href="#">NP_006866</a>
UniProt:	<a href="#">Q9P1W9</a>

## Application Details

Application Notes:	Optimal working dilutions should be determined experimentally by the investigator.
Comment:	Antigen size: 311 AA
Restrictions:	For Research Use only

## Handling

Format:	Liquid
Concentration:	Lot specific
Buffer:	Liquid. Purified antibody supplied in 1x PBS buffer with 0.09 % (w/v) sodium azide and 2 % sucrose.
Preservative:	Sodium azide
Precaution of Use:	This product contains Sodium azide: a POISONOUS AND HAZARDOUS SUBSTANCE which should be handled by trained staff only.
Handling Advice:	Avoid repeated freeze-thaw cycles.
Storage:	-20 °C
Storage Comment:	For short term use, store at 2-8°C up to 1 week. For long term storage, store at -20°C in small aliquots to prevent freeze-thaw cycles.

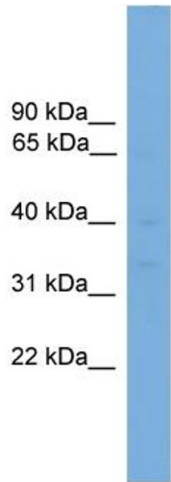


Western Blotting

**Image 1. WB Suggested Anti-PIM2 Antibody Titration:** 0.2-1 ug/ml

**ELISA Titer:** 1:1562500

**Positive Control:** HepG2 cell lysate



Rabbit Anti-PIM2 Antibody  
Catalog Number: ARP52272  
Lot Number: QC29914  
Lane: HepG2 Cell Lysate

Antibody Titration: 1.0µg/ml  
Gel Concentration: 12%

Western Blotting

**Image 2. WB Suggested Anti-PIM2**

Antibody Titration: 0.2-1 µg/mL ELISA Titer: 1:1562500

Positive Control: HepG2 cell lysate