

Datasheet for ABIN2784863  
**anti-PRSS23 antibody (C-Term)**[Go to Product page](#)

## 2 Images

## Overview

Quantity:	100 µL
Target:	PRSS23
Binding Specificity:	C-Term
Reactivity:	Human, Mouse, Rat, Cow, Dog, Guinea Pig, Horse, Rabbit, Zebrafish (Danio rerio)
Host:	Rabbit
Clonality:	Polyclonal
Conjugate:	This PRSS23 antibody is un-conjugated
Application:	Western Blotting (WB)

## Product Details

Immunogen:	The immunogen is a synthetic peptide directed towards the C terminal region of human PRSS23
Sequence:	VSPPAKQLPG GRIHFSGYDN DRPGNLVYRF CDVKDETYDL LYQQCDAQPG
Predicted Reactivity:	Cow: 100%, Dog: 100%, Guinea Pig: 100%, Horse: 100%, Human: 100%, Mouse: 100%, Rabbit: 100%, Rat: 100%, Zebrafish: 90%
Characteristics:	This is a rabbit polyclonal antibody against PRSS23. It was validated on Western Blot.
Purification:	Affinity Purified

## Target Details

Target:	PRSS23
---------	--------

## Target Details

Alternative Name:	PRSS23 ( <a href="#">PRSS23 Products</a> )
Background:	<p>This gene encodes a member of the trypsin family of serine proteases. Mouse studies found a decrease of mRNA levels after ovulation was induced. This gene seems to be highly conserved in vertebrates and may be an important ovarian protease.</p> <p>Alias Symbols: MGC5107, SIG13, SPUVE, ZSIG13</p> <p>Protein Interaction Partner: APP, ELAVL1, UBC, TRAPPC4, NOC4L, TMEM222, ODF2L, NCAPD3, NIPBL, MAPK8IP2, HSPA4, PHF23, PDDC1, CHP1, PDPK1, RACGAP1, RECQL4, EFNA3, GRK6, FXR1, TCF12, SLC25A6, SHMT1, PPIA, B2M, ACTG1, RPL4P5,</p> <p>Protein Size: 383</p>
Molecular Weight:	41 kDa
Gene ID:	11098
NCBI Accession:	<a href="#">NM_007173</a> , <a href="#">NP_009104</a>
UniProt:	<a href="#">O95084</a>

## Application Details

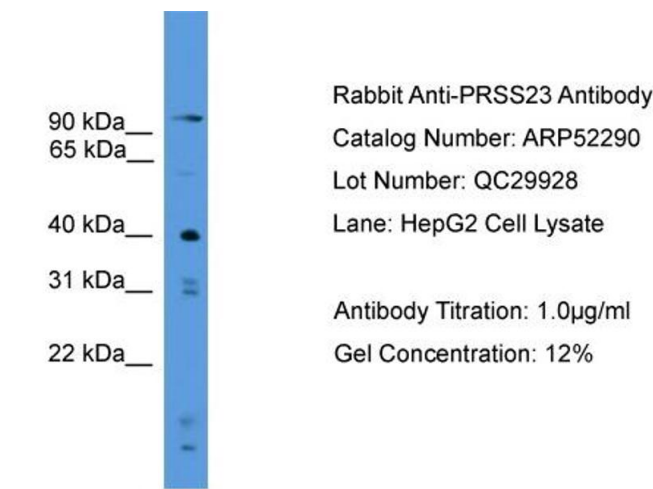
Application Notes:	Optimal working dilutions should be determined experimentally by the investigator.
Comment:	Antigen size: 383 AA
Restrictions:	For Research Use only

## Handling

Format:	Liquid
Concentration:	Lot specific
Buffer:	Liquid. Purified antibody supplied in 1x PBS buffer with 0.09 % (w/v) sodium azide and 2 % sucrose.
Preservative:	Sodium azide
Precaution of Use:	This product contains Sodium azide: a POISONOUS AND HAZARDOUS SUBSTANCE which should be handled by trained staff only.
Handling Advice:	Avoid repeated freeze-thaw cycles.
Storage:	-20 °C
Storage Comment:	For short term use, store at 2-8°C up to 1 week. For long term storage, store at -20°C in small

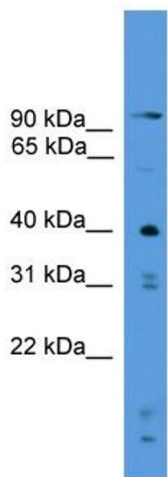
aliquots to prevent freeze-thaw cycles.

Images



Western Blotting

**Image 1.** WB Suggested Anti-PRSS23  
Antibody Titration: 0.2-1 µg/mL ELISA Titer: 1:12500  
Positive Control: HepG2 cell lysate



Western Blotting

**Image 2.** WB Suggested Anti-PRSS23 Antibody Titration:  
0.2-1 µg/ml  
**ELISA Titer:** 1:312500  
**Positive Control:** HepG2 cell lysate