

Datasheet for ABIN2784868
anti-WIF1 antibody (N-Term)



[Go to Product page](#)

2 Images

Overview

Quantity:	100 µL
Target:	WIF1
Binding Specificity:	N-Term
Reactivity:	Human, Rat, Mouse, Horse, Rabbit, Zebrafish (Danio rerio), Cow, Guinea Pig, Dog
Host:	Rabbit
Clonality:	Polyclonal
Conjugate:	This WIF1 antibody is un-conjugated
Application:	Western Blotting (WB)

Product Details

Immunogen:	The immunogen is a synthetic peptide directed towards the N terminal region of human WIF1
Sequence:	RKAQQRMPAI PVNIHSMNFT WQAAGQAEYF YEFLSLRSLD KGIMADPTVN
Predicted Reactivity:	Cow: 100%, Dog: 93%, Guinea Pig: 100%, Horse: 100%, Human: 100%, Mouse: 100%, Rabbit: 100%, Rat: 100%, Zebrafish: 83%
Characteristics:	This is a rabbit polyclonal antibody against WIF1. It was validated on Western Blot.
Purification:	Affinity Purified

Target Details

Target:	WIF1
Alternative Name:	WIF1 (WIF1 Products)

Target Details

Background:	<p>The protein encoded by this gene functions to inhibit WNT proteins, which are extracellular signaling molecules that play a role in embryonic development. This protein contains a WNT inhibitory factor (WIF) domain and five epidermal growth factor (EGF)-like domains, and is thought to be involved in mesoderm segmentation. This gene functions as a tumor suppressor gene, and has been found to be epigenetically silenced in various cancers.</p> <p>Alias Symbols: WIF-1</p> <p>Protein Interaction Partner: KRTAP10-3, KRTAP10-8, ICOS, RPL37, WNT1,</p> <p>Protein Size: 379</p>
Molecular Weight:	38 kDa
Gene ID:	11197
NCBI Accession:	NM_007191 , NP_009122
UniProt:	Q9Y5W5
Pathways:	WNT Signaling , Positive Regulation of fat Cell Differentiation

Application Details

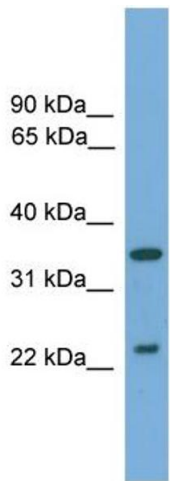
Application Notes:	Optimal working dilutions should be determined experimentally by the investigator.
Comment:	Antigen size: 379 AA
Restrictions:	For Research Use only

Handling

Format:	Liquid
Concentration:	Lot specific
Buffer:	Liquid. Purified antibody supplied in 1x PBS buffer with 0.09 % (w/v) sodium azide and 2 % sucrose.
Preservative:	Sodium azide
Precaution of Use:	This product contains Sodium azide: a POISONOUS AND HAZARDOUS SUBSTANCE which should be handled by trained staff only.
Handling Advice:	Avoid repeated freeze-thaw cycles.
Storage:	-20 °C
Storage Comment:	For short term use, store at 2-8°C up to 1 week. For long term storage, store at -20°C in small

aliquots to prevent freeze-thaw cycles.

Images

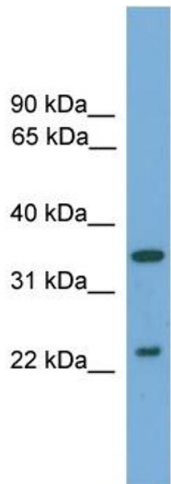


Western Blotting

Image 1. WB Suggested Anti-WIF1 Antibody Titration: 0.2-1 ug/ml

ELISA Titer: 1:312500

Positive Control: Human Muscle



Rabbit Anti-WIF1 Antibody
Catalog Number: ARP52298
Lot Number: QC28954
Lane: Fetal Muscle Lysate

Antibody Titration: 1.0µg/ml
Gel Concentration: 12%

Western Blotting

Image 2. WB Suggested Anti-WIF1

Antibody Titration: 0.2-1 µg/mL ELISA Titer: 1::12500

Positive Control: Human Muscle