

Datasheet for ABIN2784869  
**anti-POLI antibody (N-Term)**[Go to Product page](#)

## 2 Images

## Overview

Quantity:	100 µL
Target:	POLI
Binding Specificity:	N-Term
Reactivity:	Human, Rat, Mouse, Horse, Cow, Zebrafish (Danio rerio), Dog, Guinea Pig, Rabbit, Saccharomyces cerevisiae
Host:	Rabbit
Clonality:	Polyclonal
Conjugate:	This POLI antibody is un-conjugated
Application:	Western Blotting (WB)

## Product Details

Immunogen:	The immunogen is a synthetic peptide directed towards the N terminal region of human POLI
Sequence:	PVVERLGFDE NFVDLTEMVE KRLQQQSDE LSAVTVSGHV YNNQSINLLD
Predicted Reactivity:	Cow: 100%, Dog: 100%, Guinea Pig: 100%, Horse: 100%, Human: 100%, Mouse: 100%, Rabbit: 100%, Rat: 100%, Yeast: 82%, Zebrafish: 86%
Characteristics:	This is a rabbit polyclonal antibody against POLI. It was validated on Western Blot using a cell lysate as a positive control.
Purification:	Affinity Purified

## Target Details

Target:	POLI
---------	------

## Target Details

Alternative Name:	POLI ( <a href="#">POLI Products</a> )
Background:	<p>POLI is an error-prone DNA polymerase specifically involved in DNA repair. POLI plays an important role in translesion synthesis, where the normal high-fidelity DNA polymerases cannot proceed and DNA synthesis stalls. POLI favors Hoogsteen base-pairing in the active site. POLI inserts the correct base with high-fidelity opposite an adenosine template. POLI exhibits low fidelity and efficiency opposite a thymidine template, where it will preferentially insert guanosine. POLI may play a role in hypermutation of immunoglobulin genes. POLI forms a Schiff base with 5'-deoxyribose phosphate at abasic sites, but may not have lyase activity.</p> <p>Alias Symbols: RAD30B, RAD3OB</p> <p>Protein Interaction Partner: TMEM239, TRIM39, ZBTB44, UBC, TRAF6, DAZAP2, RNF11, TRIM23, POLH, PCNA, APP, REV1, XRCC1, UBB, UBA52, CALCOCO2, DVL2,</p> <p>Protein Size: 740</p>
Molecular Weight:	83 kDa
Gene ID:	11201
NCBI Accession:	<a href="#">NM_007195</a> , <a href="#">NP_009126</a>
UniProt:	<a href="#">Q9UNA4</a>
Pathways:	<a href="#">DNA Damage Repair</a>

## Application Details

Application Notes:	Optimal working dilutions should be determined experimentally by the investigator.
Comment:	Antigen size: 740 AA
Restrictions:	For Research Use only

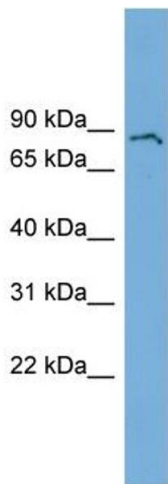
## Handling

Format:	Liquid
Concentration:	Lot specific
Buffer:	Liquid. Purified antibody supplied in 1x PBS buffer with 0.09 % (w/v) sodium azide and 2 % sucrose.
Preservative:	Sodium azide
Precaution of Use:	This product contains Sodium azide: a POISONOUS AND HAZARDOUS SUBSTANCE which should be handled by trained staff only.

Handling

Handling Advice:	Avoid repeated freeze-thaw cycles.
Storage:	-20 °C
Storage Comment:	For short term use, store at 2-8°C up to 1 week. For long term storage, store at -20°C in small aliquots to prevent freeze-thaw cycles.

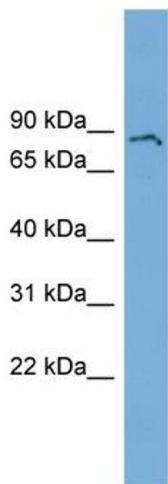
Images



**Western Blotting**

**Image 1. WB Suggested Anti-POLI Antibody Titration:** 0.2-1 ug/ml

**Positive Control:** Human Lung



Rabbit Anti-POLI Antibody  
Catalog Number: ARP52299  
Lot Number: QC28955  
Lane: Fetal Lung Lysate

Antibody Titration: 1.0µg/ml  
Gel Concentration: 12%

**Western Blotting**

**Image 2. WB Suggested Anti-POLI**

Antibody Titration: 0.2-1 µg/mL

Positive Control: Human Lung