

Datasheet for ABIN2784870
anti-RASSF8 antibody (N-Term)[Go to Product page](#)

2 Images

Overview

Quantity:	100 µL
Target:	RASSF8
Binding Specificity:	N-Term
Reactivity:	Human, Mouse, Rat, Cow, Dog, Horse, Rabbit, Guinea Pig, Zebrafish (Danio rerio)
Host:	Rabbit
Clonality:	Polyclonal
Conjugate:	This RASSF8 antibody is un-conjugated
Application:	Western Blotting (WB)

Product Details

Immunogen:	The immunogen is a synthetic peptide directed towards the N terminal region of human RASSF8
Sequence:	GRTGRYTLIE KWRDTERHLA PHENPIISLN KWGQYASDVQ LILRRTGPSL
Predicted Reactivity:	Cow: 100%, Dog: 100%, Guinea Pig: 100%, Horse: 100%, Human: 100%, Mouse: 100%, Rabbit: 100%, Rat: 100%, Zebrafish: 86%
Characteristics:	This is a rabbit polyclonal antibody against RASSF8. It was validated on Western Blot.
Purification:	Affinity Purified

Target Details

Target:	RASSF8
---------	--------

Target Details

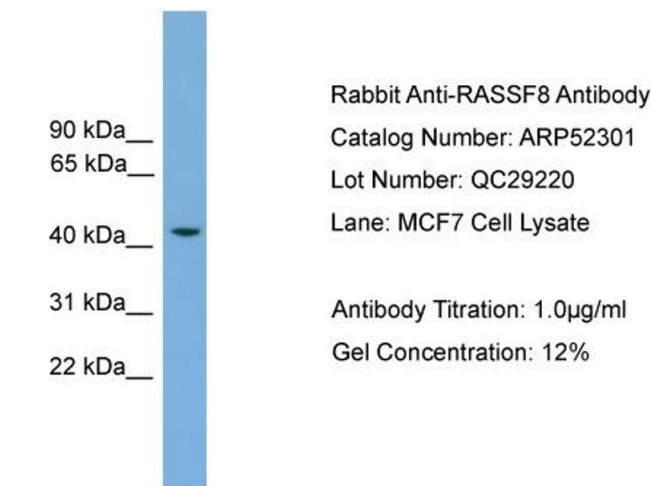
Alternative Name:	RASSF8 (RASSF8 Products)
Background:	<p>The function of this protein remains unknown.</p> <p>Alias Symbols: C12orf2, HoJ-1, HOJ1</p> <p>Protein Interaction Partner: KDM1A, AMOT, ANKRD28, YAP1, LYN, YWHAE, KLC1, APP, UBC, PARD3, YWHAH, YWHAG, FRMD6, PSMD4,</p> <p>Protein Size: 392</p>
Molecular Weight:	45 kDa
Gene ID:	11228
NCBI Accession:	NM_007211 , NP_009142
Pathways:	Chromatin Binding

Application Details

Application Notes:	Optimal working dilutions should be determined experimentally by the investigator.
Comment:	Antigen size: 392 AA
Restrictions:	For Research Use only

Handling

Format:	Liquid
Concentration:	Lot specific
Buffer:	Liquid. Purified antibody supplied in 1x PBS buffer with 0.09 % (w/v) sodium azide and 2 % sucrose.
Preservative:	Sodium azide
Precaution of Use:	This product contains Sodium azide: a POISONOUS AND HAZARDOUS SUBSTANCE which should be handled by trained staff only.
Handling Advice:	Avoid repeated freeze-thaw cycles.
Storage:	-20 °C
Storage Comment:	For short term use, store at 2-8°C up to 1 week. For long term storage, store at -20°C in small aliquots to prevent freeze-thaw cycles.



Rabbit Anti-RASSF8 Antibody
Catalog Number: ARP52301
Lot Number: QC29220
Lane: MCF7 Cell Lysate

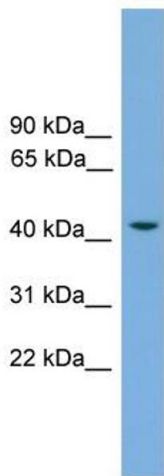
Antibody Titration: 1.0µg/ml
Gel Concentration: 12%

Western Blotting

Image 1. WB Suggested Anti-RASSF8

Antibody Titration: 0.2-1 µg/mL

Positive Control: MCF7 cell lysate



Western Blotting

Image 2. WB Suggested Anti-RASSF8 Antibody Titration:

0.2-1 ug/ml

Positive Control: MCF7 cell lysate