

Datasheet for ABIN2784872  
**anti-NXPH3 antibody (N-Term)**[Go to Product page](#)

## 2 Images

## Overview

Quantity:	100 µL
Target:	NXPH3
Binding Specificity:	N-Term
Reactivity:	Human, Mouse, Rat, Dog, Horse, Cow, Guinea Pig, Rabbit, Pig
Host:	Rabbit
Clonality:	Polyclonal
Conjugate:	This NXPH3 antibody is un-conjugated
Application:	Western Blotting (WB)

## Product Details

Immunogen:	The immunogen is a synthetic peptide directed towards the N terminal region of human NXPH3
Sequence:	RDDHEGQPRP RVPRKRGHIS PKSRPMANST LLGLLAPPGE AWGILGQPPN
Predicted Reactivity:	Cow: 100%, Dog: 100%, Guinea Pig: 92%, Horse: 100%, Human: 100%, Mouse: 100%, Pig: 93%, Rabbit: 93%, Rat: 100%
Characteristics:	This is a rabbit polyclonal antibody against NXPH3. It was validated on Western Blot.
Purification:	Affinity Purified

## Target Details

Target:	NXPH3
Alternative Name:	NXPH3 ( <a href="#">NXPH3 Products</a> )

## Target Details

Background: NXPH3 may be signaling molecules that resemble neuropeptides. Ligand for alpha-neurexins.  
Alias Symbols: NPH3  
Protein Interaction Partner: CUL4A, TAB1, NRXN1,  
Protein Size: 252

Molecular Weight: 28 kDa

Gene ID: 11248

NCBI Accession: [NM\\_007225](#), [NP\\_009156](#)

UniProt: [Q9Z2N5](#)

## Application Details

Application Notes: Optimal working dilutions should be determined experimentally by the investigator.

Comment: Antigen size: 252 AA

Restrictions: For Research Use only

## Handling

Format: Liquid

Concentration: Lot specific

Buffer: Liquid. Purified antibody supplied in 1x PBS buffer with 0.09 % (w/v) sodium azide and 2 % sucrose.

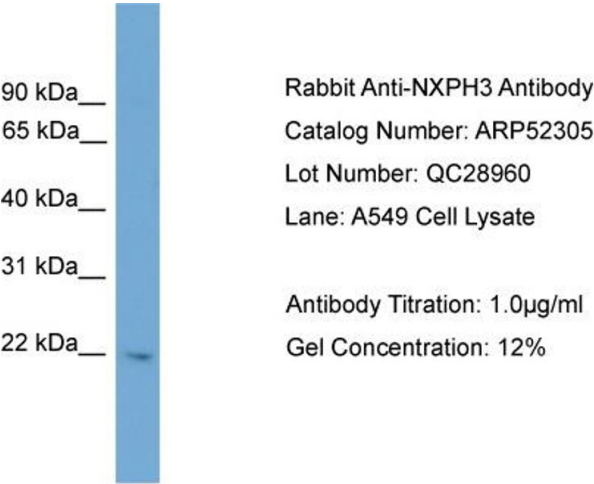
Preservative: Sodium azide

Precaution of Use: This product contains Sodium azide: a POISONOUS AND HAZARDOUS SUBSTANCE which should be handled by trained staff only.

Handling Advice: Avoid repeated freeze-thaw cycles.

Storage: -20 °C

Storage Comment: For short term use, store at 2-8°C up to 1 week. For long term storage, store at -20°C in small aliquots to prevent freeze-thaw cycles.



**Western Blotting**

**Image 1.** WB Suggested Anti-NXPH3

Antibody Titration: 0.2-1 µg/mL ELISA Titer: 1:1562500

Positive Control: A549 cell lysate



**Western Blotting**

**Image 2. WB Suggested Anti-NXPH3 Antibody Titration:**

0.2-1 ug/ml

**ELISA Titer:** 1:1562500

**Positive Control:** A549 cell lysate