

Datasheet for ABIN2784875
anti-KLHL2 antibody (Middle Region)[Go to Product page](#)

2 Images

Overview

Quantity:	100 µL
Target:	KLHL2
Binding Specificity:	Middle Region
Reactivity:	Human, Mouse, Rat, Dog, Cow, Guinea Pig, Horse, Rabbit, Zebrafish (Danio rerio)
Host:	Rabbit
Clonality:	Polyclonal
Conjugate:	This KLHL2 antibody is un-conjugated
Application:	Western Blotting (WB)

Product Details

Immunogen:	The immunogen is a synthetic peptide directed towards the middle region of human KLHL2
Sequence:	TYAEQHFADV VLSEEFNLNG IEQVCSLISS DKLTISSEK VFEAVIAWVN
Predicted Reactivity:	Cow: 100%, Dog: 100%, Guinea Pig: 100%, Horse: 100%, Human: 100%, Mouse: 100%, Rabbit: 100%, Rat: 100%, Zebrafish: 93%
Characteristics:	This is a rabbit polyclonal antibody against KLHL2. It was validated on Western Blot using a cell lysate as a positive control.
Purification:	Affinity Purified

Target Details

Target:	KLHL2
---------	-------

Target Details

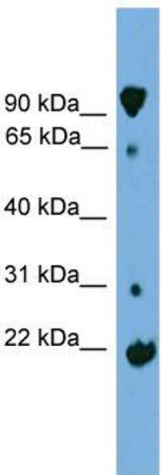
Alternative Name:	KLHL2 (KLHL2 Products)
Background:	<p>KLHL2 may play a role in organizing the actin cytoskeleton of the brain cells.</p> <p>Alias Symbols: ABP-KELCH, MAV, MAYVEN</p> <p>Protein Interaction Partner: ZNF114, CCDC43, TMA16, TXNDC12, TNPO2, KLHL2, UBE2C, CUL3, SDCBP, BCAM, CLK2, WNK4, WNK1, KLHL12, WNK2, WNK3, UBE2D1, NACC1, ACTC1, KEAP1, Dctn2,</p> <p>Protein Size: 593</p>
Molecular Weight:	66 kDa
Gene ID:	11275
NCBI Accession:	NM_007246 , NP_009177
UniProt:	Q8JZP3

Application Details

Application Notes:	Optimal working dilutions should be determined experimentally by the investigator.
Comment:	Antigen size: 593 AA
Restrictions:	For Research Use only

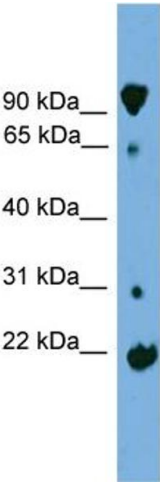
Handling

Format:	Liquid
Concentration:	Lot specific
Buffer:	Liquid. Purified antibody supplied in 1x PBS buffer with 0.09 % (w/v) sodium azide and 2 % sucrose.
Preservative:	Sodium azide
Precaution of Use:	This product contains Sodium azide: a POISONOUS AND HAZARDOUS SUBSTANCE which should be handled by trained staff only.
Handling Advice:	Avoid repeated freeze-thaw cycles.
Storage:	-20 °C
Storage Comment:	For short term use, store at 2-8°C up to 1 week. For long term storage, store at -20°C in small aliquots to prevent freeze-thaw cycles.



Western Blotting

Image 1. WB Suggested Anti-KLHL2 Antibody Titration:
0.2-1 ug/ml
ELISA Titer: 1:312500
Positive Control: HepG2 cell lysate



Rabbit Anti-KLHL2 Antibody
Catalog Number: ARP52309
Lot Number: QC28963
Lane: HepG2 Cell Lysate

Antibody Titration: 1.0µg/ml
Gel Concentration: 12%

Western Blotting

Image 2. WB Suggested Anti-KLHL2
Antibody Titration: 0.2-1 µg/mL ELISA Titer: 1::12500
Positive Control: HepG2 cell lysate