



Datasheet for ABIN2784877
anti-PNMA2 antibody (Middle Region)



[Go to Product page](#)

2 Images

Overview

| | |
|----------------------|--------------------------------------|
| Quantity: | 100 µL |
| Target: | PNMA2 |
| Binding Specificity: | Middle Region |
| Reactivity: | Human, Horse, Dog, Pig |
| Host: | Rabbit |
| Clonality: | Polyclonal |
| Conjugate: | This PNMA2 antibody is un-conjugated |
| Application: | Western Blotting (WB) |

Product Details

| | |
|-----------------------|--|
| Immunogen: | The immunogen is a synthetic peptide directed towards the middle region of human PNMA2 |
| Sequence: | ELKDQGPPPS FLELMKVIRE EEEEEASFEN ESIEEPEERD GYGRWNHEGD |
| Predicted Reactivity: | Dog: 100%, Horse: 79%, Human: 100%, Pig: 79% |
| Characteristics: | This is a rabbit polyclonal antibody against PNMA2. It was validated on Western Blot. |
| Purification: | Affinity Purified |

Target Details

| | |
|-------------------|--|
| Target: | PNMA2 |
| Alternative Name: | PNMA2 (PNMA2 Products) |
| Background: | The function of PNMA2 remains unknown. |

Target Details

Alias Symbols: KIAA0883, MA2, MM2, RGAG2

Protein Interaction Partner: RTP5, TTLL10, ZNF417, LRR1, ZNF587, FAM161A, ENKD1, CCDC33, SCNM1, CBX8, PRPF31, MORF4L2, PPIG, RNF8, TOP3B, SDCBP, RPL9, PSMA1, BYSL, GTPBP4, COL4A3BP, BUB1B, LATS2, Dlg4, UBC, PARD6G, MARK4, PARD3, PNMA1, YWHAZ, SLX4, CTNNBIP1,

Protein Size: 364

Molecular Weight: 41 kDa

Gene ID: 10687

NCBI Accession: [NM_007257](#), [NP_009188](#)

UniProt: [Q9UL42](#)

Application Details

Application Notes: Optimal working dilutions should be determined experimentally by the investigator.

Comment: Antigen size: 364 AA

Restrictions: For Research Use only

Handling

Format: Liquid

Concentration: Lot specific

Buffer: Liquid. Purified antibody supplied in 1x PBS buffer with 0.09 % (w/v) sodium azide and 2 % sucrose.

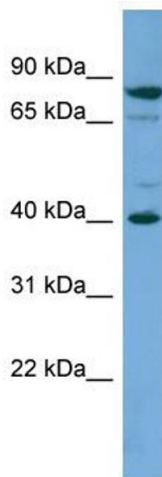
Preservative: Sodium azide

Precaution of Use: This product contains Sodium azide: a POISONOUS AND HAZARDOUS SUBSTANCE which should be handled by trained staff only.

Handling Advice: Avoid repeated freeze-thaw cycles.

Storage: -20 °C

Storage Comment: For short term use, store at 2-8°C up to 1 week. For long term storage, store at -20°C in small aliquots to prevent freeze-thaw cycles.



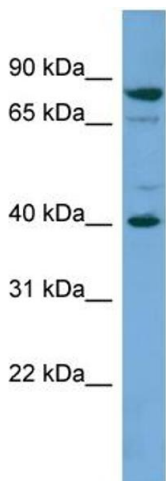
Western Blotting

Image 1. WB Suggested Anti-PNMA2 Antibody Titration:

0.2-1 ug/ml

ELISA Titer: 1:1562500

Positive Control: HepG2 cell lysate



Rabbit Anti-PNMA2 Antibody
Catalog Number: ARP52314
Lot Number: QC29421
Lane: HepG2 Cell Lysate

Antibody Titration: 1.0µg/ml

Gel Concentration: 12%

Western Blotting

Image 2. WB Suggested Anti-PNMA2

Antibody Titration: 0.2-1 µg/mL ELISA Titer: 1:1562500

Positive Control: HepG2 cell lysate