

Datasheet for ABIN2784898
anti-FIL1L antibody (Middle Region)[Go to Product page](#)

1 Image

Overview

Quantity:	100 µL
Target:	FIL1L (FILIP1L)
Binding Specificity:	Middle Region
Reactivity:	Human, Mouse, Rabbit, Cow, Guinea Pig, Horse, Dog, Rat
Host:	Rabbit
Clonality:	Polyclonal
Conjugate:	This FIL1L antibody is un-conjugated
Application:	Western Blotting (WB)

Product Details

Immunogen:	The immunogen is a synthetic peptide directed towards the middle region of human FILIP1L
Sequence:	KSLRPSLNGR RISDPQVFSK EVQTEAVDNE PPDYKSLIPL ERAVINGQLY
Predicted Reactivity:	Cow: 100%, Dog: 93%, Guinea Pig: 100%, Horse: 100%, Human: 100%, Mouse: 100%, Rabbit: 100%, Rat: 100%
Characteristics:	This is a rabbit polyclonal antibody against FILIP1L. It was validated on Western Blot using a cell lysate as a positive control.
Purification:	Affinity Purified

Target Details

Target:	FIL1L (FILIP1L)
---------	-----------------

Target Details

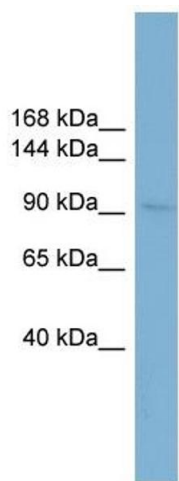
Alternative Name:	FILIP1L (FILIP1L Products)
Background:	<p>FILIP1L acts as a regulator of the antiangiogenic activity on endothelial cells. When overexpressed in endothelial cells, FILIP1L leads to inhibition of cell proliferation and migration and an increase in apoptosis. FILIP1L inhibits melanoma growth when e</p> <p>Alias Symbols: DOC-1, DOC1, GIP90, GIP130, GIP130a, GIP130b, GIP130c</p> <p>Protein Size: 893</p>
Molecular Weight:	102 kDa
Gene ID:	11259
NCBI Accession:	NM_014890 , NP_055705
UniProt:	Q4L180

Application Details

Application Notes:	Optimal working dilutions should be determined experimentally by the investigator.
Comment:	Antigen size: 893 AA
Restrictions:	For Research Use only

Handling

Format:	Liquid
Concentration:	Lot specific
Buffer:	Liquid. Purified antibody supplied in 1x PBS buffer with 0.09 % (w/v) sodium azide and 2 % sucrose.
Preservative:	Sodium azide
Precaution of Use:	This product contains Sodium azide: a POISONOUS AND HAZARDOUS SUBSTANCE which should be handled by trained staff only.
Handling Advice:	Avoid repeated freeze-thaw cycles.
Storage:	-20 °C
Storage Comment:	For short term use, store at 2-8°C up to 1 week. For long term storage, store at -20°C in small aliquots to prevent freeze-thaw cycles.



Western Blotting

Image 1. WB Suggested Anti-FILIP1L Antibody Titration:

0.2-1 ug/ml

Positive Control: NCI-H226 cell lysate