

Datasheet for ABIN2784906  
**anti-Keratin 24 antibody (Middle Region)**[Go to Product page](#)

## 1 Image

## Overview

Quantity:	100 µL
Target:	Keratin 24 (KRT24)
Binding Specificity:	Middle Region
Reactivity:	Human, Horse, Pig
Host:	Rabbit
Clonality:	Polyclonal
Conjugate:	This Keratin 24 antibody is un-conjugated
Application:	Western Blotting (WB)

## Product Details

Immunogen:	The immunogen is a synthetic peptide directed towards the middle region of human KRT24
Sequence:	GSVNMGSRDL VSGDSRSGSC SGQGRDSSKT RVTKTIVEEL VDGKVVSSQV
Predicted Reactivity:	Horse: 93%, Human: 100%, Pig: 87%
Characteristics:	This is a rabbit polyclonal antibody against KRT24. It was validated on Western Blot using a cell lysate as a positive control.
Purification:	Affinity Purified

## Target Details

Target:	Keratin 24 (KRT24)
Alternative Name:	KRT24 ( <a href="#">KRT24 Products</a> )

## Target Details

Background:	<p>KRT24 is a member of the type I (acidic) keratin family, which belongs to the superfamily of intermediate filament (IF) proteins. Keratins are heteropolymeric structural proteins which form the intermediate filament. These filaments, along with actin microfilaments and microtubules, compose the cytoskeleton of epithelial cells. The type I keratin genes are clustered in a region of chromosome 17q12-q21.</p> <p>Alias Symbols: FLJ20261, MGC138169, MGC138173, K24, KA24</p> <p>Protein Interaction Partner: CRK, CUL4A, CUL4B, CUL5, NEDD8, CUL2, CUL3, DCUN1D1, COPS5, COPS6, CUL1,</p> <p>Protein Size: 525</p>
Molecular Weight:	55 kDa
Gene ID:	192666
NCBI Accession:	<a href="#">NM_019016</a> , <a href="#">NP_061889</a>
UniProt:	<a href="#">Q2M2I5</a>

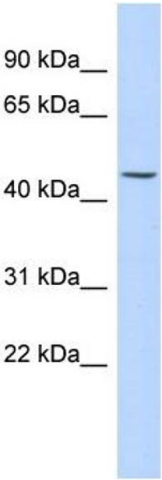
## Application Details

Application Notes:	Optimal working dilutions should be determined experimentally by the investigator.
Comment:	Antigen size: 525 AA
Restrictions:	For Research Use only

## Handling

Format:	Liquid
Concentration:	Lot specific
Buffer:	Liquid. Purified antibody supplied in 1x PBS buffer with 0.09 % (w/v) sodium azide and 2 % sucrose.
Preservative:	Sodium azide
Precaution of Use:	This product contains Sodium azide: a POISONOUS AND HAZARDOUS SUBSTANCE which should be handled by trained staff only.
Handling Advice:	Avoid repeated freeze-thaw cycles.
Storage:	-20 °C
Storage Comment:	For short term use, store at 2-8°C up to 1 week. For long term storage, store at -20°C in small

aliquots to prevent freeze-thaw cycles.



Western Blotting

**Image 1. WB Suggested Anti-KRT24 Antibody Titration:**

0.2-1 ug/ml

**ELISA Titer:** 1:12500

**Positive Control:** Human kidney