

Datasheet for ABIN2784909
anti-CRY2 antibody (N-Term)[Go to Product page](#)

2 Images

1 Publication

Overview

Quantity:	100 µL
Target:	CRY2
Binding Specificity:	N-Term
Reactivity:	Human, Mouse, Rat, Cow, Dog, Guinea Pig, Horse, Rabbit, Sheep, Zebrafish (Danio rerio)
Host:	Rabbit
Clonality:	Polyclonal
Conjugate:	This CRY2 antibody is un-conjugated
Application:	Western Blotting (WB), Immunohistochemistry (IHC)

Product Details

Immunogen:	The immunogen is a synthetic peptide directed towards the N terminal region of human CRY2
Sequence:	IELNGQKPPL TYKRFQAIIS RMELPKKPVG LVTSQQMESC RAEIQENHDE
Predicted Reactivity:	Cow: 100%, Dog: 100%, Guinea Pig: 100%, Horse: 100%, Human: 100%, Mouse: 100%, Rabbit: 100%, Rat: 100%, Sheep: 100%, Zebrafish: 86%
Characteristics:	This is a rabbit polyclonal antibody against CRY2. It was validated on Western Blot using a cell lysate as a positive control.
Purification:	Affinity Purified

Target Details

Target:	CRY2
---------	------

Target Details

Alternative Name:	CRY2 (CRY2 Products)
Background:	<p>CRY2 is a blue light-dependent regulator of the circadian feedback loop. CRY2 inhibits CLOCK NPAS2-ARNTL E box-mediated transcription. CRY2 acts, in conjunction with CRY2, in maintaining period length and circadian rhythmicity. CRY2 has no photolyase activity. CRY2 is capable of translocating circadian clock core proteins such as PER proteins to the nucleus. CRY2 may inhibit CLOCK NPAS2-ARNTL transcriptional activity through stabilizing the unphosphorylated form of ARNTL.</p> <p>Alias Symbols: FLJ10332, HCRY2, KIAA0658, PHLL2</p> <p>Protein Interaction Partner: MTUS2, PDE9A, CTBP1, UBC, FBXL3, FBXL21, BTRC, CUL1, SKP1, ATXN1, Csnk1e, PER3, PER2, PER1, PPP5C, TTC1, CRY2, TIMELESS,</p> <p>Protein Size: 593</p>
Molecular Weight:	67 kDa
Gene ID:	1408
NCBI Accession:	NM_021117 , NP_066940
UniProt:	Q49AN0
Pathways:	Response to Water Deprivation , Protein targeting to Nucleus

Application Details

Application Notes:	Optimal working dilutions should be determined experimentally by the investigator.
Comment:	Antigen size: 593 AA
Restrictions:	For Research Use only

Handling

Format:	Liquid
Concentration:	Lot specific
Buffer:	Liquid. Purified antibody supplied in 1x PBS buffer with 0.09 % (w/v) sodium azide and 2 % sucrose.
Preservative:	Sodium azide
Precaution of Use:	This product contains Sodium azide: a POISONOUS AND HAZARDOUS SUBSTANCE which should be handled by trained staff only.

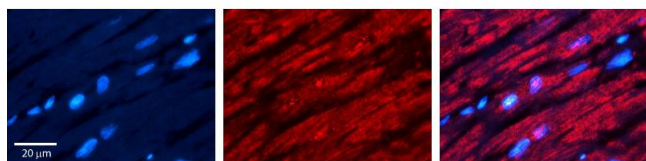
Handling

Handling Advice:	Avoid repeated freeze-thaw cycles.
Storage:	-20 °C
Storage Comment:	For short term use, store at 2-8°C up to 1 week. For long term storage, store at -20°C in small aliquots to prevent freeze-thaw cycles.

Publications

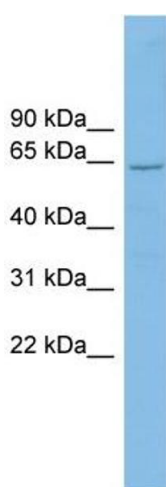
Product cited in:	Currie, Doherty, Sillar: "Deep-brain photoreception links luminance detection to motor output in <i>Xenopus</i> frog tadpoles." in: Proceedings of the National Academy of Sciences of the United States of America , Vol. 113, Issue 21, pp. 6053-8, (2016) (PubMed).
-------------------	---

Images



Immunohistochemistry

Image 1. Rabbit Anti-CRY2 Antibody Catalog Number: ARP52398_P050 Formalin Fixed Paraffin Embedded Tissue: Human heart Tissue Observed Staining: Cytoplasmic Primary Antibody Concentration: 1:100 Other Working Concentrations: N/A Secondary Antibody: Donkey anti-Rabbit-Cy3 Secondary Antibody Concentration: 1:200 Magnification: 20X Exposure Time: 0.5 - 2.0 sec



Western Blotting

Image 2. WB Suggested Anti-CRY2 Antibody Titration: 0.2-1 ug/ml ELISA Titer: 1:62500 Positive Control: U937 cell lysate