



[Go to Product page](#)

Datasheet for ABIN2784910

anti-EEF1B2 antibody (Middle Region)

1 Image

1 Publication

Overview

Quantity:	100 µL
Target:	EEF1B2
Binding Specificity:	Middle Region
Reactivity:	Human, Mouse, Rabbit, Cow, Horse, Dog, Goat, Guinea Pig
Host:	Rabbit
Clonality:	Polyclonal
Conjugate:	This EEF1B2 antibody is un-conjugated
Application:	Western Blotting (WB)

Product Details

Immunogen:	The immunogen is a synthetic peptide directed towards the middle region of human EEF1B2
Sequence:	VKKALGKYGP ADVEDTTGSG ATDSKDDDDI DLFSGSDEEEE SEEAKRLREE
Predicted Reactivity:	Cow: 86%, Dog: 93%, Goat: 86%, Guinea Pig: 93%, Horse: 100%, Human: 100%, Mouse: 85%, Rabbit: 100%
Characteristics:	This is a rabbit polyclonal antibody against EEF1B2. It was validated on Western Blot using a cell lysate as a positive control.
Purification:	Affinity Purified

Target Details

Target:	EEF1B2
---------	--------

Target Details

Alternative Name: [EEF1B2 \(EEF1B2 Products\)](#)

Background: EEF1B2 is a translation elongation factor. The protein is a guanine nucleotide exchange factor involved in the transfer of aminoacylated tRNAs to the ribosome. This gene encodes a translation elongation factor. The protein is a guanine nucleotide exchange factor involved in the transfer of aminoacylated tRNAs to the ribosome. Alternative splicing results in three transcript variants which differ only in the 5' UTR.

Alias Symbols: EEF1B, EEF1B1, EF1B

Protein Interaction Partner: HUWE1, EEF1G, SUMO2, UBC, EED, VARS, DNAJA1, EEF1D, FBXO6, VHL, ADRB2, NPM1, IGSF8, VCAM1, ITGA4, FN1, CSNK2A1, SMURF1, RPLP0P6, STRIP1, UBQLN2, STRN4, NUP153, PLOD3, SRSF9, RPL7A, HSPD1, GTF2F1, EEF1A1, APP, UQCRH, TPR, SNRPA, RPS2, CAND1, CUL1, CUL2, CU

Protein Size: 225

Molecular Weight: 25 kDa

Gene ID: 1933

NCBI Accession: [NM_021121](#), [NP_066944](#)

UniProt: [P24534](#)

Application Details

Application Notes: Optimal working dilutions should be determined experimentally by the investigator.

Comment: Antigen size: 225 AA

Restrictions: For Research Use only

Handling

Format: Liquid

Concentration: Lot specific

Buffer: Liquid. Purified antibody supplied in 1x PBS buffer with 0.09 % (w/v) sodium azide and 2 % sucrose.

Preservative: Sodium azide

Precaution of Use: This product contains Sodium azide: a POISONOUS AND HAZARDOUS SUBSTANCE which should be handled by trained staff only.

Handling Advice: Avoid repeated freeze-thaw cycles.

Handling

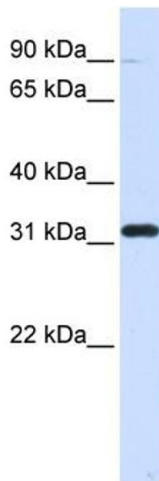
Storage: -20 °C

Storage Comment: For short term use, store at 2-8°C up to 1 week. For long term storage, store at -20°C in small aliquots to prevent freeze-thaw cycles.

Publications

Product cited in: Ueda, Nagae, Kozawa, Morishita, Kimura, Nagase, Ohara, Yoshida, Asano: "Heterotrimeric G protein betagamma subunits stimulate FLJ00018, a guanine nucleotide exchange factor for Rac1 and Cdc42." in: **The Journal of biological chemistry**, Vol. 283, Issue 4, pp. 1946-53, (2008) ([PubMed](#)).

Images



Western Blotting

Image 1. WB Suggested Anti-EEF1B2 Antibody Titration:

0.2-1 ug/ml

ELISA Titer: 1:12500

Positive Control: 293T cell lysate