



[Go to Product page](#)

Datasheet for ABIN2784912
anti-CSH1 antibody (Middle Region)

2 Images

Overview

Quantity:	100 µL
Target:	CSH1
Binding Specificity:	Middle Region
Reactivity:	Human, Mouse, Rat, Dog, Guinea Pig, Rabbit, Cow, Goat, Horse, Pig, Sheep
Host:	Rabbit
Clonality:	Polyclonal
Application:	Western Blotting (WB)

Product Details

Immunogen:	The immunogen is a synthetic peptide directed towards the middle region of human CSH2
Sequence:	LFDHAMLQAH RAHQLAIDTY QEFRLEDGSR RTGQILKQTY SKFDTNSHNNH
Predicted Reactivity:	Cow: 79%, Dog: 86%, Goat: 90%, Guinea Pig: 79%, Horse: 86%, Human: 100%, Mouse: 86%, Pig: 86%, Rabbit: 79%, Rat: 86%, Sheep: 90%
Characteristics:	This is a rabbit polyclonal antibody against CSH2. It was validated on Western Blot using a cell lysate as a positive control.
Purification:	Affinity Purified

Target Details

Target:	CSH1
Alternative Name:	CSH2 (CSH1 Products)

Target Details

Background: The protein encoded by this gene is a member of the somatotropin/prolactin family of hormones and plays an important role in growth control. The gene is located at the growth hormone locus on chromosome 17 along with four other related genes in the same transcriptional orientation, an arrangement which is thought to have evolved by a series of gene duplications. Although the five genes share a remarkably high degree of sequence identity, they are expressed selectively in different tissues. Alternative splicing generates additional isoforms of each of the five growth hormones. This particular family member is expressed mainly in the placenta and utilizes multiple transcription initiation sites. Expression of the identical mature proteins for chorionic somatomammotropin hormones 1 and 2 is upregulated during development, while the ratio of 1 to 2 increases by term. Structural and expression differences provide avenues for developmental regulation and tissue specificity.

Alias Symbols: CS-2, CSB, hCS-B

Protein Interaction Partner: PTPN12, SMAD9, SMAD4, SMAD3, SMAD2, POLR2A,

Protein Size: 122

Molecular Weight: 14 kDa

Gene ID: 1443

NCBI Accession: [NM_022645](#), [NP_072171](#)

UniProt: [B1A4H9](#)

Pathways: [Response to Growth Hormone Stimulus](#)

Application Details

Application Notes: Optimal working dilutions should be determined experimentally by the investigator.

Comment: Antigen size: 122 AA

Restrictions: For Research Use only

Handling

Format: Liquid

Concentration: Lot specific

Buffer: Liquid. Purified antibody supplied in 1x PBS buffer with 0.09 % (w/v) sodium azide and 2 % sucrose.

Preservative: Sodium azide

Handling

Precaution of Use:	This product contains Sodium azide: a POISONOUS AND HAZARDOUS SUBSTANCE which should be handled by trained staff only.
Handling Advice:	Avoid repeated freeze-thaw cycles.
Storage:	-20 °C
Storage Comment:	For short term use, store at 2-8°C up to 1 week. For long term storage, store at -20°C in small aliquots to prevent freeze-thaw cycles.

Images

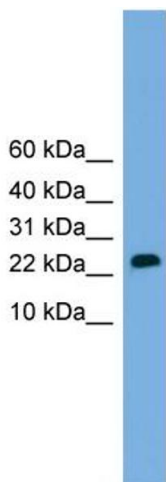


Western Blotting

Image 1. WB Suggested Anti-CSH2 Antibody Titration:

0.2-1 ug/ml

Positive Control: Human Placenta



Rabbit Anti-CSH2 Antibody
Catalog Number: ARP52403
Lot Number: QC21655
Lane: Placenta Lysate

Antibody Titration: 1.0µg/ml
Gel Concentration: 10-20%

Western Blotting

Image 2. WB Suggested Anti-CSH2

Antibody Titration: 0.2-1 µg/mL

Positive Control: Human Placenta