

Datasheet for ABIN2784922  
**anti-FBXW10 antibody (Middle Region)**[Go to Product page](#)

## 1 Image

## Overview

Quantity:	100 µL
Target:	FBXW10
Binding Specificity:	Middle Region
Reactivity:	Human, Mouse, Guinea Pig, Horse, Rabbit, Rat, Cow, Dog
Host:	Rabbit
Clonality:	Polyclonal
Conjugate:	This FBXW10 antibody is un-conjugated
Application:	Western Blotting (WB)

## Product Details

Immunogen:	The immunogen is a synthetic peptide directed towards the middle region of human FBXW10
Sequence:	RKIHLLDIIQ VKAIPVEFRG HAGSVRALFL CEEENFLLSG SYDLSIRYWD
Predicted Reactivity:	Cow: 100%, Dog: 93%, Guinea Pig: 77%, Horse: 86%, Human: 100%, Mouse: 100%, Rabbit: 86%, Rat: 93%
Characteristics:	This is a rabbit polyclonal antibody against FBXW10. It was validated on Western Blot using a cell lysate as a positive control.
Purification:	Affinity Purified

## Target Details

Target:	FBXW10
---------	--------

## Target Details

Alternative Name:	FBXW10 ( <a href="#">FBXW10 Products</a> )
Background:	<p>Members of the F-box protein family, such as FBXW10, are characterized by an approximately 40-amino acid F-box motif. SCF complexes, formed by SKP1 (MIM 601434), cullin (see CUL1, MIM 603134), and F-box proteins, act as protein-ubiquitin ligases. F-box proteins interact with SKP1 through the F box, and they interact with ubiquitination targets through other protein interaction domains. Western blots using two different antibodies against two unique regions of this protein target confirm the same apparent molecular weight in our tests. Members of the F-box protein family, such as FBXW10, are characterized by an approximately 40-amino acid F-box motif. SCF complexes, formed by SKP1 (MIM 601434), cullin (see CUL1, MIM 603134), and F-box proteins, act as protein-ubiquitin ligases. F-box proteins interact with SKP1 through the F box, and they interact with ubiquitination targets through other protein interaction domains (Jin et al., 2004 [PubMed 15520277]).[supplied by OMIM].</p> <p>Alias Symbols: Fbw10, HREP, SM25H2, SM2SH2</p> <p>Protein Interaction Partner: CUL5,</p> <p>Protein Size: 1051</p>
Molecular Weight:	120 kDa
Gene ID:	10517
NCBI Accession:	<a href="#">NM_031456</a> , <a href="#">NP_113644</a>
UniProt:	<a href="#">Q5XX13</a>

## Application Details

Application Notes:	Optimal working dilutions should be determined experimentally by the investigator.
Comment:	Antigen size: 1051 AA
Restrictions:	For Research Use only

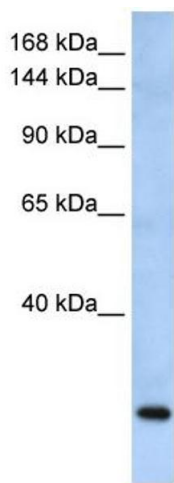
## Handling

Format:	Liquid
Concentration:	Lot specific
Buffer:	Liquid. Purified antibody supplied in 1x PBS buffer with 0.09 % (w/v) sodium azide and 2 % sucrose.
Preservative:	Sodium azide

## Handling

Precaution of Use:	This product contains Sodium azide: a POISONOUS AND HAZARDOUS SUBSTANCE which should be handled by trained staff only.
Handling Advice:	Avoid repeated freeze-thaw cycles.
Storage:	-20 °C
Storage Comment:	For short term use, store at 2-8°C up to 1 week. For long term storage, store at -20°C in small aliquots to prevent freeze-thaw cycles.

## Images



Western Blotting

**Image 1. WB Suggested Anti-FBXW10 Antibody Titration:**

0.2-1 ug/ml

**ELISA Titer:** 1:12500

**Positive Control:** Human Muscle