



[Go to Product page](#)

Datasheet for ABIN2784927

anti-CC2D1B antibody (C-Term)

1 Image

Overview

Quantity:	100 µL
Target:	CC2D1B
Binding Specificity:	C-Term
Reactivity:	Human, Mouse, Rat, Pig, Rabbit, Cow, Dog, Guinea Pig, Horse
Host:	Rabbit
Clonality:	Polyclonal
Conjugate:	This CC2D1B antibody is un-conjugated
Application:	Western Blotting (WB)

Product Details

Immunogen:	The immunogen is a synthetic peptide directed towards the C terminal region of human CC2D1B
Sequence:	IVRGMNLPAP PGVTPDDLDA FVRFEFHYPN SDQAQKSKTA VVKNTNSPEF
Predicted Reactivity:	Cow: 93%, Dog: 93%, Guinea Pig: 93%, Horse: 93%, Human: 100%, Mouse: 100%, Pig: 100%, Rabbit: 100%, Rat: 100%
Characteristics:	This is a rabbit polyclonal antibody against CC2D1B. It was validated on Western Blot using a cell lysate as a positive control.
Purification:	Affinity Purified

Target Details

Target:	CC2D1B
---------	--------

Target Details

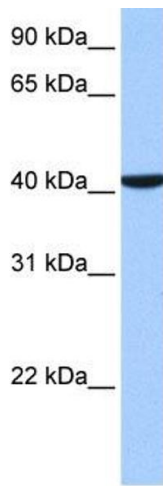
Alternative Name:	CC2D1B (CC2D1B Products)
Background:	<p>CC2D1B belongs to the CC2D1 family. It contains 1 C2 domain. A function of Cc2d1b/Cc2d1a and their Drosophila homologue l(2)gd in D.melanogaster in Notch trafficking have been reported.</p> <p>Alias Symbols: KIAA1836, RP11-155018.2</p> <p>Protein Interaction Partner: MDFI, KLHL40, UGP2, TLN1, SPP1,</p> <p>Protein Size: 391</p>
Molecular Weight:	41 kDa
Gene ID:	200014
NCBI Accession:	NM_032449
UniProt:	Q5T0F9

Application Details

Application Notes:	Optimal working dilutions should be determined experimentally by the investigator.
Comment:	Antigen size: 391 AA
Restrictions:	For Research Use only

Handling

Format:	Liquid
Concentration:	Lot specific
Buffer:	Liquid. Purified antibody supplied in 1x PBS buffer with 0.09 % (w/v) sodium azide and 2 % sucrose.
Preservative:	Sodium azide
Precaution of Use:	This product contains Sodium azide: a POISONOUS AND HAZARDOUS SUBSTANCE which should be handled by trained staff only.
Handling Advice:	Avoid repeated freeze-thaw cycles.
Storage:	-20 °C
Storage Comment:	For short term use, store at 2-8°C up to 1 week. For long term storage, store at -20°C in small aliquots to prevent freeze-thaw cycles.



Western Blotting

Image 1. WB Suggested Anti-CC2D1B Antibody Titration:

0.2-1 ug/ml

Positive Control: Human Placenta