

Datasheet for ABIN2784929

**anti-RWDD2A antibody (N-Term)**[Go to Product page](#)**1** Image

## Overview

Quantity:	100 µL
Target:	RWDD2A
Binding Specificity:	N-Term
Reactivity:	Human, Mouse, Cow, Dog, Guinea Pig, Horse, Rabbit, Rat
Host:	Rabbit
Clonality:	Polyclonal
Conjugate:	This RWDD2A antibody is un-conjugated
Application:	Western Blotting (WB)

## Product Details

Immunogen:	The immunogen is a synthetic peptide directed towards the N terminal region of human RWDD2A
Sequence:	NALTNIKRYL EGTREALPPK IEFVITLQIE EPKVKIDLQV TMPHSYPYVA
Predicted Reactivity:	Cow: 86%, Dog: 100%, Guinea Pig: 100%, Horse: 100%, Human: 100%, Mouse: 100%, Rabbit: 93%, Rat: 100%
Characteristics:	This is a rabbit polyclonal antibody against RWDD2A. It was validated on Western Blot using a cell lysate as a positive control.
Purification:	Affinity Purified

## Target Details

Target:	RWDD2A
---------	--------

## Target Details

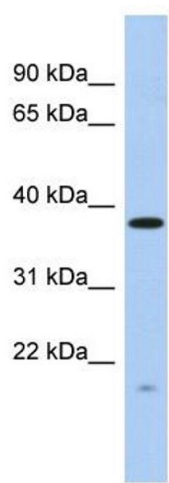
Alternative Name:	RWDD2A ( <a href="#">RWDD2A Products</a> )
Background:	The specific function of RWDD2A is not yet known. Alias Symbols: MGC13523, MGC138208, RWDD2, dJ747H23.2 Protein Size: 292
Molecular Weight:	32 kDa
Gene ID:	112611
NCBI Accession:	<a href="#">NM_033411</a> , <a href="#">NP_219479</a>
UniProt:	<a href="#">Q9UIY3</a>

## Application Details

Application Notes:	Optimal working dilutions should be determined experimentally by the investigator.
Comment:	Antigen size: 292 AA
Restrictions:	For Research Use only

## Handling

Format:	Liquid
Concentration:	Lot specific
Buffer:	Liquid. Purified antibody supplied in 1x PBS buffer with 0.09 % (w/v) sodium azide and 2 % sucrose.
Preservative:	Sodium azide
Precaution of Use:	This product contains Sodium azide: a POISONOUS AND HAZARDOUS SUBSTANCE which should be handled by trained staff only.
Handling Advice:	Avoid repeated freeze-thaw cycles.
Storage:	-20 °C
Storage Comment:	For short term use, store at 2-8°C up to 1 week. For long term storage, store at -20°C in small aliquots to prevent freeze-thaw cycles.



Western Blotting				
Image	1.	WB	Suggested	Anti-RWDD2A Antibody
Titration: 0.2-1 ug/ml				
ELISA Titer: 1:62500				
Positive Control: Human Thymus				