

Datasheet for ABIN2784943
anti-TSEN15 antibody (C-Term)[Go to Product page](#)

1 Image

Overview

Quantity:	100 µL
Target:	TSEN15
Binding Specificity:	C-Term
Reactivity:	Human, Mouse, Rat, Pig, Cow, Dog, Guinea Pig, Rabbit
Host:	Rabbit
Clonality:	Polyclonal
Conjugate:	This TSEN15 antibody is un-conjugated
Application:	Western Blotting (WB)

Product Details

Sequence:	ASLSHNRIRE ILKASRKLGQ DPGLPMSFTL AIVESDSTIV YYKLTDGFML
Predicted Reactivity:	Cow: 100%, Dog: 100%, Guinea Pig: 93%, Human: 100%, Mouse: 100%, Pig: 100%, Rabbit: 93%, Rat: 100%
Characteristics:	This is a rabbit polyclonal antibody against Tsen15. It was validated on Western Blot.
Purification:	Affinity Purified

Target Details

Target:	TSEN15
Alternative Name:	Tsen15 (TSEN15 Products)
Background:	Tsen15 is a non-catalytic subunit of the tRNA-splicing endonuclease complex, a complex

Target Details

responsible for identification and cleavage of the splice sites in pre-tRNA. It cleaves pre-tRNA at the 5' and 3' splice sites to release the intron. The products are an intron and two tRNA half-molecules bearing 2',3' cyclic phosphate and 5'-OH termini. There are no conserved sequences at the splice sites, but the intron is invariably located at the same site in the gene, placing the splice sites an invariant distance from the constant structural features of the tRNA body. The tRNA splicing endonuclease is also involved in mRNA processing via its association with pre-mRNA 3' end processing factors, establishing a link between pre-tRNA splicing and pre-mRNA 3' end formation, suggesting that the endonuclease subunits function in multiple RNA-processing events.

Alias Symbols: 5730449L18Rik, AL023077, Sen15

Protein Interaction Partner: Eed,

Protein Size: 168

Molecular Weight:	18 kDa
-------------------	--------

Gene ID:	66637
----------	-------

NCBI Accession:	NM_025677 , NP_079953
-----------------	---

UniProt:	Q8R3W5
----------	------------------------

Application Details

Application Notes:	Optimal working dilutions should be determined experimentally by the investigator.
--------------------	--

Comment:	Antigen size: 168 AA
----------	----------------------

Restrictions:	For Research Use only
---------------	-----------------------

Handling

Format:	Liquid
---------	--------

Concentration:	Lot specific
----------------	--------------

Buffer:	Liquid. Purified antibody supplied in 1x PBS buffer with 0.09 % (w/v) sodium azide and 2 % sucrose.
---------	---

Preservative:	Sodium azide
---------------	--------------

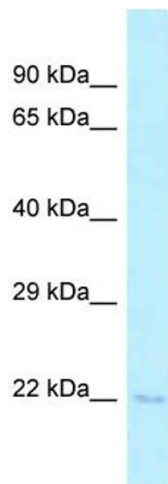
Precaution of Use:	This product contains Sodium azide: a POISONOUS AND HAZARDOUS SUBSTANCE which should be handled by trained staff only.
--------------------	--

Handling Advice:	Avoid repeated freeze-thaw cycles.
------------------	------------------------------------

Handling

Storage:	-20 °C
Storage Comment:	For short term use, store at 2-8°C up to 1 week. For long term storage, store at -20°C in small aliquots to prevent freeze-thaw cycles.

Images



Western Blotting

Image 1. WB Suggested Anti-Tsen15 Antibody Titration: 1.0 ug/ml Positive Control: Mouse Spleen