



Datasheet for ABIN2784961
anti-UBE2F antibody (N-Term)



[Go to Product page](#)

2 Images

Overview

| | |
|----------------------|--|
| Quantity: | 100 µL |
| Target: | UBE2F |
| Binding Specificity: | N-Term |
| Reactivity: | Human, Mouse, Rat, Cow, Dog, Horse, Guinea Pig, Rabbit |
| Host: | Rabbit |
| Clonality: | Polyclonal |
| Application: | Western Blotting (WB), Immunohistochemistry (IHC) |

Product Details

| | |
|-----------------------|---|
| Immunogen: | The immunogen is a synthetic peptide directed towards the N terminal region of human UBE2F |
| Sequence: | MLTLASKLKR DDGLKGSRTA ATASDSTRRV SVRDKLLVKE VAELEANLPC |
| Predicted Reactivity: | Cow: 100%, Dog: 93%, Guinea Pig: 100%, Horse: 100%, Human: 100%, Mouse: 100%, Rabbit: 93%, Rat: 100% |
| Characteristics: | This is a rabbit polyclonal antibody against UBE2F. It was validated on Western Blot using a cell lysate as a positive control. |
| Purification: | Affinity Purified |

Target Details

| | |
|-------------------|--|
| Target: | UBE2F |
| Alternative Name: | UBE2F (UBE2F Products) |

Target Details

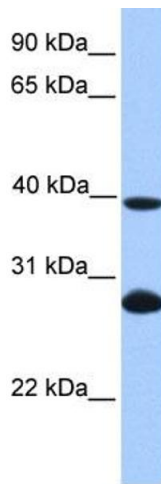
| | |
|-------------------|---|
| Background: | UBE2F belongs to the ubiquitin-conjugating enzyme family. UBE2F accepts the ubiquitin-like protein NEDD8 from the UBA3-NAE1 E1 complex and catalyzes its covalent attachment to other proteins. Alias Symbols: MGC18120, NCE2 Protein Interaction Partner: CUL1, UBC, NEDD8, DCUN1D3, DCUN1D2, DCUN1D1, RNF7, CUL5, S100A11, vif, ELAVL1, RNF34, Protein Size: 185 |
| Molecular Weight: | 21 kDa |
| Gene ID: | 140739 |
| NCBI Accession: | NM_080678 , NP_542409 |
| UniProt: | Q969M7 |

Application Details

| | |
|--------------------|--|
| Application Notes: | Optimal working dilutions should be determined experimentally by the investigator. |
| Comment: | Antigen size: 185 AA |
| Restrictions: | For Research Use only |

Handling

| | |
|--------------------|---|
| Format: | Liquid |
| Concentration: | Lot specific |
| Buffer: | Liquid. Purified antibody supplied in 1x PBS buffer with 0.09 % (w/v) sodium azide and 2 % sucrose. |
| Preservative: | Sodium azide |
| Precaution of Use: | This product contains Sodium azide: a POISONOUS AND HAZARDOUS SUBSTANCE which should be handled by trained staff only. |
| Handling Advice: | Avoid repeated freeze-thaw cycles. |
| Storage: | -20 °C |
| Storage Comment: | For short term use, store at 2-8°C up to 1 week. For long term storage, store at -20°C in small aliquots to prevent freeze-thaw cycles. |

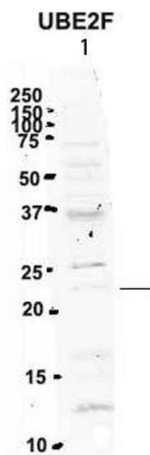


Western Blotting

Image 1. WB Suggested Anti-UBE2F Antibody Titration:

0.2-1 ug/ml

Positive Control: HeLa cell lysate



See Immunoblot 2 Data for more information.

Western Blotting

Image 2. Sample Type: 1. Human NT-2 cells (60ug)

Primary Antibody Dilution: 2ug/ml

Secondary Antibody: IRDye 800CW goat anti-rabbit from Li-COR Bioscience

Secondary Antibody Dilution: 1: 20,000

Image Submitted by: Yuzhi Chen

University of Arkansas for Medical Science