

Datasheet for ABIN2784971  
**anti-RAB40A antibody (Middle Region)**[Go to Product page](#)

## 1 Image

## Overview

Quantity:	100 µL
Target:	RAB40A
Binding Specificity:	Middle Region
Reactivity:	Human, Mouse, Rat, Cow, Zebrafish (Danio rerio), Rabbit, Dog, Goat, Guinea Pig, Horse
Host:	Rabbit
Clonality:	Polyclonal
Conjugate:	This RAB40A antibody is un-conjugated
Application:	Western Blotting (WB)

## Product Details

Immunogen:	The immunogen is a synthetic peptide directed towards the middle region of human RAB40A
Sequence:	RPSKVLSQLD LCCRTIVSCT PVHLVDKLPL PSTLRSHLKS FSMAGLNAR
Predicted Reactivity:	Cow: 85%, Dog: 79%, Goat: 79%, Guinea Pig: 86%, Horse: 86%, Human: 100%, Mouse: 86%, Rabbit: 86%, Rat: 86%, Zebrafish: 79%
Characteristics:	This is a rabbit polyclonal antibody against RAB40A. It was validated on Western Blot using a cell lysate as a positive control.
Purification:	Affinity Purified

## Target Details

Target:	RAB40A
---------	--------

## Target Details

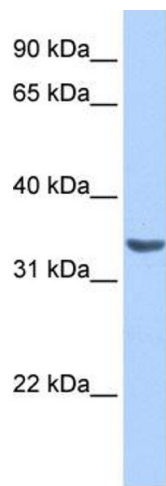
Alternative Name:	RAB40A ( <a href="#">RAB40A Products</a> )
Background:	<p>RAB40A belongs to the small GTPase superfamily, Rab family. It contains 1 SOCS box domain. RAB40A may be a substrate-recognition component of a SCF-like ECS (Elongin-Cullin-SOCS-box protein) E3 ubiquitin ligase complex which mediates the ubiquitination and subsequent proteasomal degradation of target proteins.</p> <p>Alias Symbols: MGC142061, RAR2A, Rar-2, RAR2</p> <p>Protein Interaction Partner: Ccdc64b, HSP90AA1, UBC,</p> <p>Protein Size: 277</p>
Molecular Weight:	31 kDa
Gene ID:	142684
NCBI Accession:	<a href="#">NM_080879</a> , <a href="#">NP_543155</a>
UniProt:	<a href="#">Q8WXH6</a>

## Application Details

Application Notes:	Optimal working dilutions should be determined experimentally by the investigator.
Comment:	Antigen size: 277 AA
Restrictions:	For Research Use only

## Handling

Format:	Liquid
Concentration:	Lot specific
Buffer:	Liquid. Purified antibody supplied in 1x PBS buffer with 0.09 % (w/v) sodium azide and 2 % sucrose.
Preservative:	Sodium azide
Precaution of Use:	This product contains Sodium azide: a POISONOUS AND HAZARDOUS SUBSTANCE which should be handled by trained staff only.
Handling Advice:	Avoid repeated freeze-thaw cycles.
Storage:	-20 °C
Storage Comment:	For short term use, store at 2-8°C up to 1 week. For long term storage, store at -20°C in small aliquots to prevent freeze-thaw cycles.



**Western Blotting**

**Image 1. WB Suggested Anti-RAB40A Antibody Titration:**

0.2-1 ug/ml

**Positive Control:** HepG2 cell lysate