



Datasheet for ABIN2784978
anti-PRRC1 antibody (Middle Region)



[Go to Product page](#)

2 Images

Overview

Quantity:	100 µL
Target:	PRRC1
Binding Specificity:	Middle Region
Reactivity:	Human, Mouse, Rat, Cow, Dog, Guinea Pig, Horse, Rabbit, Zebrafish (Danio rerio)
Host:	Rabbit
Clonality:	Polyclonal
Conjugate:	This PRRC1 antibody is un-conjugated
Application:	Western Blotting (WB)

Product Details

Immunogen:	The immunogen is a synthetic peptide directed towards the middle region of human PRRC1
Sequence:	VGEAGQSNIA PQPVGYYAAGL KGAQERIDSL RRTGVIHEKQ TAVSVENFIA
Predicted Reactivity:	Cow: 100%, Dog: 100%, Guinea Pig: 100%, Horse: 100%, Human: 100%, Mouse: 100%, Rabbit: 100%, Rat: 100%, Zebrafish: 93%
Characteristics:	This is a rabbit polyclonal antibody against PRRC1. It was validated on Western Blot using a cell lysate as a positive control.
Purification:	Affinity Purified

Target Details

Target:	PRRC1
---------	-------

Target Details

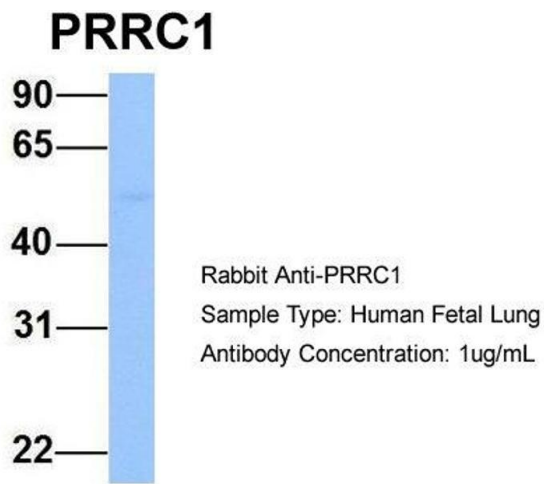
Alternative Name:	PRRC1 (PRRC1 Products)
Background:	The specific function of PRRC1 is not yet known. Alias Symbols: FLJ32875 Protein Interaction Partner: SEC23B, PIN1, UBC, CUTC, MCM7, MCM2, AP1G1, APP, ELAVL1, Plk1, Protein Size: 445
Molecular Weight:	47 kDa
Gene ID:	133619
NCBI Accession:	NM_130809 , NP_570721
UniProt:	Q96M27

Application Details

Application Notes:	Optimal working dilutions should be determined experimentally by the investigator.
Comment:	Antigen size: 445 AA
Restrictions:	For Research Use only

Handling

Format:	Liquid
Concentration:	Lot specific
Buffer:	Liquid. Purified antibody supplied in 1x PBS buffer with 0.09 % (w/v) sodium azide and 2 % sucrose.
Preservative:	Sodium azide
Precaution of Use:	This product contains Sodium azide: a POISONOUS AND HAZARDOUS SUBSTANCE which should be handled by trained staff only.
Handling Advice:	Avoid repeated freeze-thaw cycles.
Storage:	-20 °C
Storage Comment:	For short term use, store at 2-8°C up to 1 week. For long term storage, store at -20°C in small aliquots to prevent freeze-thaw cycles.



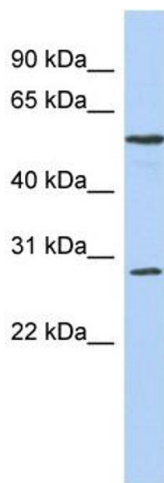
Western Blotting

Image 1. Host: Rabbit

Target Name: PRRC1

Sample Tissue: Human Fetal Lung

Antibody Dilution: 1.0 μ g/mL



Western Blotting

Image 2. WB Suggested Anti-PRRC1 Antibody Titration:

0.2-1 μ g/ml

ELISA Titer: 1:312500

Positive Control: OVCAR-3 cell lysate