

Datasheet for ABIN2784984  
**anti-WIPF2 antibody (C-Term)**



[Go to Product page](#)

1 Image

## Overview

Quantity:	100 µL
Target:	WIPF2
Binding Specificity:	C-Term
Reactivity:	Human, Mouse, Rat, Guinea Pig, Zebrafish (Danio rerio), Cow, Dog, Horse, Rabbit, Saccharomyces cerevisiae
Host:	Rabbit
Clonality:	Polyclonal
Conjugate:	This WIPF2 antibody is un-conjugated
Application:	Western Blotting (WB)

## Product Details

Immunogen:	The immunogen is a synthetic peptide directed towards the C-terminal region of HUMAN WIPF2
Sequence:	PPPPPYRMHG SEPPSRGKPP PPPSRTPAGP PPPPPPLRN GHRDSITTVR
Predicted Reactivity:	Cow: 93%, Dog: 93%, Guinea Pig: 100%, Horse: 93%, Human: 100%, Mouse: 100%, Rabbit: 93%, Rat: 100%, Yeast: 86%, Zebrafish: 100%
Characteristics:	This is a rabbit polyclonal antibody against WIPF2. It was validated on Western Blot.
Purification:	Affinity Purified

## Target Details

Target:	WIPF2
---------	-------

### Target Details

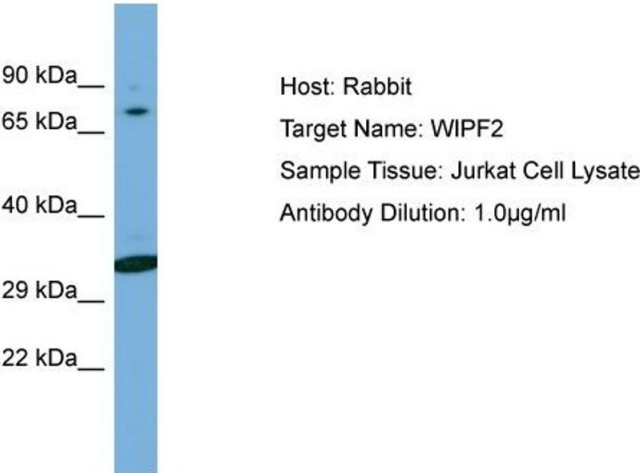
Alternative Name:	WIPF2 ( <a href="#">WIPF2 Products</a> )
Background:	<p>This gene encodes a WASP interacting protein (WIP)-related protein. It has been shown that this protein has a role in the WASP-mediated organization of the actin cytoskeleton and that this protein is a potential link between the activated platelet-derived growth factor receptor and the actin polymerization machinery.</p> <p>Protein Interaction Partner: WWOX, APBB1, TCERG1, WAS, GRB2, HNRNPDL, EIF4A3, WASL, ZFAND5, ZNF830, TXLNG, SLC4A1AP, SH3KBP1, ITSN2, DNMBP, NCK2, PFN1,</p> <p>Protein Size: 290</p>
Molecular Weight:	31 kDa
Gene ID:	147179

### Application Details

Application Notes:	Optimal working dilution should be determined by the investigator.
Restrictions:	For Research Use only

### Handling

Format:	Liquid
Concentration:	1 mg/mL
Buffer:	Liquid. Purified antibody supplied in 1x PBS buffer with 0.09 % (w/v) sodium azide and 2 % sucrose.
Preservative:	Sodium azide
Precaution of Use:	This product contains Sodium azide: a POISONOUS AND HAZARDOUS SUBSTANCE which should be handled by trained staff only.
Handling Advice:	Avoid repeat freeze-thaw cycles.
Storage:	-20 °C
Storage Comment:	For short term use, store at 2-8°C up to 1 week. For long term storage, store at -20°C in small aliquots to prevent freeze-thaw cycles.



**Western Blotting**

**Image 1.** Host: Rabbit Target Name: WIPF2 Sample Type: Jurkat Whole Cell lysates Antibody Dilution: 1.0ug/ml WIPF2 is strongly supported by BioGPS gene expression data to be expressed in Human Jurkat cells