

Datasheet for ABIN2784989

anti-CCBE1 antibody (Middle Region)[Go to Product page](#)**1** Image

Overview

Quantity:	100 µL
Target:	CCBE1
Binding Specificity:	Middle Region
Reactivity:	Human, Mouse, Rat, Cow, Dog, Guinea Pig, Rabbit, Zebrafish (Danio rerio)
Host:	Rabbit
Clonality:	Polyclonal
Conjugate:	This CCBE1 antibody is un-conjugated
Application:	Western Blotting (WB)

Product Details

Immunogen:	The immunogen is a synthetic peptide directed towards the middle region of human CCBE1
Sequence:	PMGPSPDLSH IKQGRRGVPG PPGAPGRDGS KGERGAPGPR GSPGPPGSFD
Predicted Reactivity:	Cow: 100%, Dog: 100%, Guinea Pig: 100%, Human: 100%, Mouse: 100%, Rabbit: 100%, Rat: 100%, Zebrafish: 100%
Characteristics:	This is a rabbit polyclonal antibody against CCBE1. It was validated on Western Blot using a cell lysate as a positive control.
Purification:	Affinity Purified

Target Details

Target:	CCBE1
---------	-------

Target Details

Alternative Name:	CCBE1 (CCBE1 Products)
Background:	<p>This gene is thought to function in extracellular matrix remodeling and migration. It is predominantly expressed in the ovary, but down regulated in ovarian cancer cell lines and primary carcinomas, suggesting its role as a tumour suppressor. Mutations in this gene have been associated with Hennekam lymphangiectasia-lymphedema syndrome, a generalized lymphatic dysplasia in humans.</p> <p>Alias Symbols: FLJ30681, MGC50861</p> <p>Protein Interaction Partner: KLHL12, CEP55, STX11, TOX4, SIAH2,</p> <p>Protein Size: 406</p>
Molecular Weight:	44 kDa
Gene ID:	147372
NCBI Accession:	NM_133459 , NP_597716
UniProt:	Q6UXH8

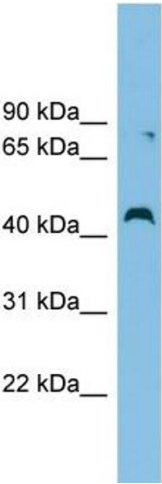
Application Details

Application Notes:	Optimal working dilutions should be determined experimentally by the investigator.
Comment:	Antigen size: 406 AA
Restrictions:	For Research Use only

Handling

Format:	Liquid
Concentration:	Lot specific
Buffer:	Liquid. Purified antibody supplied in 1x PBS buffer with 0.09 % (w/v) sodium azide and 2 % sucrose.
Preservative:	Sodium azide
Precaution of Use:	This product contains Sodium azide: a POISONOUS AND HAZARDOUS SUBSTANCE which should be handled by trained staff only.
Handling Advice:	Avoid repeated freeze-thaw cycles.
Storage:	-20 °C
Storage Comment:	For short term use, store at 2-8°C up to 1 week. For long term storage, store at -20°C in small

aliquots to prevent freeze-thaw cycles.



Western Blotting

Image 1. WB Suggested Anti-CCBE1 Antibody Titration: 0.2-1 ug/ml ELISA Titer: 1:12500 Positive Control: ACHN cell lysate