

Datasheet for ABIN2784995
anti-ACTRT1 antibody (Middle Region)[Go to Product page](#)

1 Image

Overview

Quantity:	100 µL
Target:	ACTRT1
Binding Specificity:	Middle Region
Reactivity:	Human, Cow, Dog, Guinea Pig, Horse, Mouse, Rabbit, Rat, Pig
Host:	Rabbit
Clonality:	Polyclonal
Conjugate:	This ACTRT1 antibody is un-conjugated
Application:	Western Blotting (WB)

Product Details

Immunogen:	The immunogen is a synthetic peptide directed towards the middle region of human ACTRT1
Sequence:	DTDIQNKLYA DIVLSGGTTL LPGLEERLMK EVEQLASKGT PIKITASPDR
Predicted Reactivity:	Cow: 92%, Dog: 93%, Guinea Pig: 85%, Horse: 85%, Human: 100%, Mouse: 86%, Pig: 86%, Rabbit: 85%, Rat: 86%
Characteristics:	This is a rabbit polyclonal antibody against ACTRT1. It was validated on Western Blot using a cell lysate as a positive control.
Purification:	Affinity Purified

Target Details

Target:	ACTRT1
---------	--------

Target Details

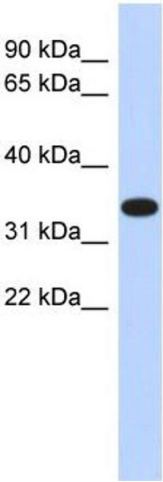
Alternative Name:	ACTRT1 (ACTRT1 Products)
Background:	The specific function of ACTRT1 is not yet known. Alias Symbols: AIP1, ARIP1, ARP-T1, ARPT1, HSD27, KIAA0705, MGC26590 Protein Size: 376
Molecular Weight:	42 kDa
Gene ID:	139741
NCBI Accession:	NM_138289 , NP_612146
UniProt:	Q8TDG2

Application Details

Application Notes:	Optimal working dilutions should be determined experimentally by the investigator.
Comment:	Antigen size: 376 AA
Restrictions:	For Research Use only

Handling

Format:	Liquid
Concentration:	Lot specific
Buffer:	Liquid. Purified antibody supplied in 1x PBS buffer with 0.09 % (w/v) sodium azide and 2 % sucrose.
Preservative:	Sodium azide
Precaution of Use:	This product contains Sodium azide: a POISONOUS AND HAZARDOUS SUBSTANCE which should be handled by trained staff only.
Handling Advice:	Avoid repeated freeze-thaw cycles.
Storage:	-20 °C
Storage Comment:	For short term use, store at 2-8°C up to 1 week. For long term storage, store at -20°C in small aliquots to prevent freeze-thaw cycles.



Western Blotting

Image 1. WB Suggested Anti-ACTRT1 Antibody Titration:

0.2-1 ug/ml

ELISA Titer: 1:312500

Positive Control: Human Pancreas