



[Go to Product page](#)

Datasheet for ABIN2784999

anti-SAAL1 antibody (N-Term)

2 Images

Overview

Quantity:	100 µL
Target:	SAAL1
Binding Specificity:	N-Term
Reactivity:	Human, Mouse, Rabbit, Dog, Cow
Host:	Rabbit
Clonality:	Polyclonal
Conjugate:	This SAAL1 antibody is un-conjugated
Application:	Western Blotting (WB)

Product Details

Immunogen:	The immunogen is a synthetic peptide directed towards the N terminal region of human SAAL1
Sequence:	MDRNPSPPPP GRDKEEEEEV AGGDCIGSTV YSKHWLFGVL SGLIQIVSPE
Predicted Reactivity:	Cow: 92%, Dog: 92%, Human: 100%, Mouse: 100%, Rabbit: 100%
Characteristics:	This is a rabbit polyclonal antibody against SAAL1. It was validated on Western Blot using a cell lysate as a positive control.
Purification:	Affinity Purified

Target Details

Target:	SAAL1
Alternative Name:	SAAL1 (SAAL1 Products)

Target Details

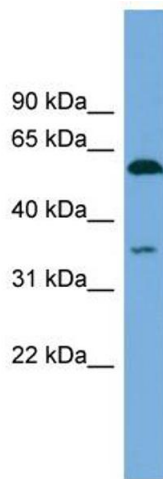
Background:	The function of this protein remains unknown. Alias Symbols: FLJ41463, SPACIA1 Protein Interaction Partner: UBC, EGFR, CA9, SHROOM3, USH1C, SYNGAP1, NEDD4, Snw1, USP19, MARK3, Protein Size: 474
Molecular Weight:	53 kDa
Gene ID:	113174
NCBI Accession:	NM_138421 , NP_612430
UniProt:	Q96ER3
Pathways:	SARS-CoV-2 Protein Interactome

Application Details

Application Notes:	Optimal working dilutions should be determined experimentally by the investigator.
Comment:	Antigen size: 474 AA
Restrictions:	For Research Use only

Handling

Format:	Liquid
Concentration:	Lot specific
Buffer:	Liquid. Purified antibody supplied in 1x PBS buffer with 0.09 % (w/v) sodium azide and 2 % sucrose.
Preservative:	Sodium azide
Precaution of Use:	This product contains Sodium azide: a POISONOUS AND HAZARDOUS SUBSTANCE which should be handled by trained staff only.
Handling Advice:	Avoid repeated freeze-thaw cycles.
Storage:	-20 °C
Storage Comment:	For short term use, store at 2-8°C up to 1 week. For long term storage, store at -20°C in small aliquots to prevent freeze-thaw cycles.

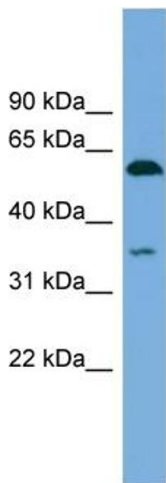


Western Blotting

Image 1. WB Suggested Anti-SAAL1 Antibody Titration:

0.2-1 ug/ml

Positive Control: MCF7 cell lysate



Rabbit Anti-SAAL1 Antibody
Catalog Number: ARP52596
Lot Number: QC28854
Lane: MCF7 Cell Lysate

Antibody Titration: 1.0µg/ml
Gel Concentration: 12%

Western Blotting

Image 2. WB Suggested Anti-SAAL1

Antibody Titration: 0.2-1 µg/mL

Positive Control: MCF7 cell lysate