

Datasheet for ABIN2785009
anti-IQCD antibody (N-Term)[Go to Product page](#)

1 Image

Overview

Quantity:	100 µL
Target:	IQCD
Binding Specificity:	N-Term
Reactivity:	Human
Host:	Rabbit
Clonality:	Polyclonal
Conjugate:	This IQCD antibody is un-conjugated
Application:	Western Blotting (WB)

Product Details

Immunogen:	The immunogen is a synthetic peptide directed towards the N terminal region of human IQCD
Sequence:	ALDILAMAPL YQAPAINRIG PKTDPSKRPA DPLKPLVLSR TKLTTIEAKR
Predicted Reactivity:	Human: 100%
Characteristics:	This is a rabbit polyclonal antibody against IQCD. It was validated on Western Blot using a cell lysate as a positive control.
Purification:	Affinity Purified

Target Details

Target:	IQCD
Alternative Name:	IQCD (IQCD Products)

Target Details

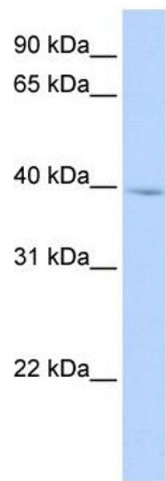
Background:	IQCD contains 1 IQ domain. The function of the IQCD protein is not known. Alias Symbols: 4933433C09Rik Protein Size: 347
Molecular Weight:	40 kDa
Gene ID:	115811
NCBI Accession:	NM_138451 , NP_612460
UniProt:	Q96DY2

Application Details

Application Notes:	Optimal working dilutions should be determined experimentally by the investigator.
Comment:	Antigen size: 347 AA
Restrictions:	For Research Use only

Handling

Format:	Liquid
Concentration:	Lot specific
Buffer:	Liquid. Purified antibody supplied in 1x PBS buffer with 0.09 % (w/v) sodium azide and 2 % sucrose.
Preservative:	Sodium azide
Precaution of Use:	This product contains Sodium azide: a POISONOUS AND HAZARDOUS SUBSTANCE which should be handled by trained staff only.
Handling Advice:	Avoid repeated freeze-thaw cycles.
Storage:	-20 °C
Storage Comment:	For short term use, store at 2-8°C up to 1 week. For long term storage, store at -20°C in small aliquots to prevent freeze-thaw cycles.



Western Blotting

Image 1. WB Suggested Anti-IQCD Antibody Titration:

0.2-1 ug/ml

ELISA Titer: 1:62500

Positive Control: Human heart