

Datasheet for ABIN2785019 anti-NOXRED1 antibody (Middle Region)



[Go to Product page](#)

1 Image

Overview

Quantity:	100 µL
Target:	NOXRED1 (C14orf148)
Binding Specificity:	Middle Region
Reactivity:	Human, Dog, Cow, Guinea Pig, Mouse
Host:	Rabbit
Clonality:	Polyclonal
Conjugate:	This NOXRED1 antibody is un-conjugated
Application:	Western Blotting (WB)

Product Details

Immunogen:	The immunogen is a synthetic peptide directed towards the middle region of human C14orf148
Sequence:	KLLLNHTNIL RPQYQYDEDS VSVWGANKGV IAALQDPTIL QATCPYSPAG
Predicted Reactivity:	Cow: 85%, Dog: 100%, Guinea Pig: 77%, Human: 100%, Mouse: 85%
Characteristics:	This is a rabbit polyclonal antibody against C14orf148. It was validated on Western Blot using a cell lysate as a positive control.
Purification:	Affinity Purified

Target Details

Target:	NOXRED1 (C14orf148)
Alternative Name:	C14orf148 (C14orf148 Products)

Target Details

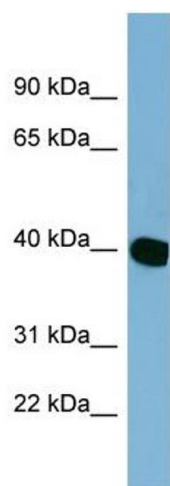
Background:	The function of this protein remains unknown. Alias Symbols: FLJ32809, C14orf148 Protein Size: 359
Molecular Weight:	39 kDa
Gene ID:	122945
NCBI Accession:	NM_001113475 , NP_001106946
UniProt:	Q6NXP6

Application Details

Application Notes:	Optimal working dilutions should be determined experimentally by the investigator.
Comment:	Antigen size: 359 AA
Restrictions:	For Research Use only

Handling

Format:	Liquid
Concentration:	Lot specific
Buffer:	Liquid. Purified antibody supplied in 1x PBS buffer with 0.09 % (w/v) sodium azide and 2 % sucrose.
Preservative:	Sodium azide
Precaution of Use:	This product contains Sodium azide: a POISONOUS AND HAZARDOUS SUBSTANCE which should be handled by trained staff only.
Handling Advice:	Avoid repeated freeze-thaw cycles.
Storage:	-20 °C
Storage Comment:	For short term use, store at 2-8°C up to 1 week. For long term storage, store at -20°C in small aliquots to prevent freeze-thaw cycles.



Western Blotting				
Image	1.	WB	Suggested	Anti-C14orf148 Antibody
Titration: 0.2-1 ug/ml				
Positive Control: HT1080 cell lysate				