



[Go to Product page](#)

Datasheet for ABIN2785025
anti-SPATA17 antibody (C-Term)

1 Image

Overview

Quantity:	100 µL
Target:	SPATA17
Binding Specificity:	C-Term
Reactivity:	Human, Rabbit
Host:	Rabbit
Clonality:	Polyclonal
Conjugate:	This SPATA17 antibody is un-conjugated
Application:	Western Blotting (WB)

Product Details

Immunogen:	The immunogen is a synthetic peptide directed towards the C terminal region of human SPATA17
Sequence:	NMFLPFSSYH KNEKYIPSMH LSSKYGPISY KEQFRSENPQ KWICDKDFQT
Predicted Reactivity:	Human: 100%, Rabbit: 91%
Characteristics:	This is a rabbit polyclonal antibody against SPATA17. It was validated on Western Blot using a cell lysate as a positive control.
Purification:	Affinity Purified

Target Details

Target:	SPATA17
---------	---------

Target Details

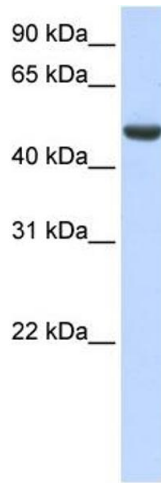
Alternative Name:	SPATA17 (SPATA17 Products)
Background:	SPATA17 contains 3 IQ domains. The function of the SPATA17 protein is not known. Alias Symbols: IQCH, MSRG-11, MSRG11, RP11-144C20.1 Protein Size: 361
Molecular Weight:	43 kDa
Gene ID:	128153
NCBI Accession:	NM_138796 , NP_620151
UniProt:	Q96L03

Application Details

Application Notes:	Optimal working dilutions should be determined experimentally by the investigator.
Comment:	Antigen size: 361 AA
Restrictions:	For Research Use only

Handling

Format:	Liquid
Concentration:	Lot specific
Buffer:	Liquid. Purified antibody supplied in 1x PBS buffer with 0.09 % (w/v) sodium azide and 2 % sucrose.
Preservative:	Sodium azide
Precaution of Use:	This product contains Sodium azide: a POISONOUS AND HAZARDOUS SUBSTANCE which should be handled by trained staff only.
Handling Advice:	Avoid repeated freeze-thaw cycles.
Storage:	-20 °C
Storage Comment:	For short term use, store at 2-8°C up to 1 week. For long term storage, store at -20°C in small aliquots to prevent freeze-thaw cycles.



Western Blotting

Image 1. WB Suggested Anti-SPATA17 Antibody

Titration: 0.2-1 ug/ml

ELISA Titer: 1:62500

Positive Control: Human brain