

Datasheet for ABIN2785028
anti-MITD1 antibody (Middle Region)[Go to Product page](#)

2 Images

Overview

Quantity:	100 µL
Target:	MITD1
Binding Specificity:	Middle Region
Reactivity:	Human, Mouse, Rat, Horse, Cow, Dog, Zebrafish (Danio rerio), Guinea Pig, Rabbit, Pig
Host:	Rabbit
Clonality:	Polyclonal
Conjugate:	This MITD1 antibody is un-conjugated
Application:	Western Blotting (WB)

Product Details

Immunogen:	The immunogen is a synthetic peptide directed towards the middle region of human MITD1
Sequence:	SHGVLLEVQY SSSIHDREIR FNNGWMIKIG RGLDYFKKPQ SRFSLGYCDF
Predicted Reactivity:	Cow: 100%, Dog: 100%, Guinea Pig: 86%, Horse: 86%, Human: 100%, Mouse: 93%, Pig: 93%, Rabbit: 93%, Rat: 93%, Zebrafish: 86%
Characteristics:	This is a rabbit polyclonal antibody against MITD1. It was validated on Western Blot using a cell lysate as a positive control.
Purification:	Affinity Purified

Target Details

Target:	MITD1
---------	-------

Target Details

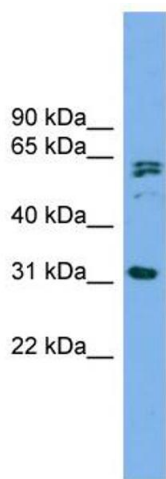
Alternative Name:	MITD1 (MITD1 Products)
Background:	MITD1 may play a role in endosomal protein transport. Alias Symbols: - Protein Interaction Partner: CHMP5, ZFYVE19, ATF7, rev, ATP6V1B1, CHMP2A, Protein Size: 249
Molecular Weight:	29 kDa
Gene ID:	129531
NCBI Accession:	NM_138798 , NP_620153
UniProt:	Q8WV92

Application Details

Application Notes:	Optimal working dilutions should be determined experimentally by the investigator.
Comment:	Antigen size: 249 AA
Restrictions:	For Research Use only

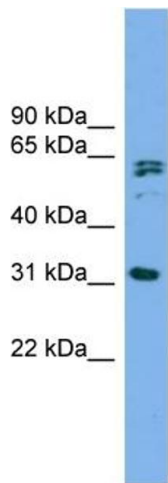
Handling

Format:	Liquid
Concentration:	Lot specific
Buffer:	Liquid. Purified antibody supplied in 1x PBS buffer with 0.09 % (w/v) sodium azide and 2 % sucrose.
Preservative:	Sodium azide
Precaution of Use:	This product contains Sodium azide: a POISONOUS AND HAZARDOUS SUBSTANCE which should be handled by trained staff only.
Handling Advice:	Avoid repeated freeze-thaw cycles.
Storage:	-20 °C
Storage Comment:	For short term use, store at 2-8°C up to 1 week. For long term storage, store at -20°C in small aliquots to prevent freeze-thaw cycles.



Western Blotting

Image 1. WB Suggested Anti-MITD1 Antibody Titration:
0.2-1 ug/ml
Positive Control: MCF7 cell lysate



Rabbit Anti-MITD1 Antibody
Catalog Number: ARP52647
Lot Number: QC28867
Lane: MCF7 Cell Lysate

Antibody Titration: 1.0µg/ml
Gel Concentration: 12%

Western Blotting

Image 2. WB Suggested Anti-MITD1
Antibody Titration: 0.2-1 µg/mL
Positive Control: MCF7 cell lysate