

Datasheet for ABIN2785030
anti-GALM antibody (Middle Region)[Go to Product page](#)

2 Images

Overview

Quantity:	100 µL
Target:	GALM
Binding Specificity:	Middle Region
Reactivity:	Human, Rat, Mouse, Guinea Pig, Cow, Dog, Horse, Rabbit, Goat, Zebrafish (Danio rerio)
Host:	Rabbit
Clonality:	Polyclonal
Conjugate:	This GALM antibody is un-conjugated
Application:	Western Blotting (WB)

Product Details

Immunogen:	The immunogen is a synthetic peptide directed towards the middle region of human GALM
Sequence:	SKEKHFCARV HHAASGRVLE VYTTQPGVQF YTGNFLDGTG KGNKNGAVYPK
Predicted Reactivity:	Cow: 100%, Dog: 93%, Goat: 100%, Guinea Pig: 100%, Horse: 100%, Human: 100%, Mouse: 100%, Rabbit: 93%, Rat: 100%, Zebrafish: 92%
Characteristics:	This is a rabbit polyclonal antibody against GALM. It was validated on Western Blot using a cell lysate as a positive control.
Purification:	Affinity Purified

Target Details

Target:	GALM
---------	------

Target Details

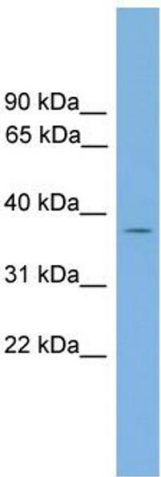
Alternative Name:	GALM (GALM Products)
Background:	<p>GALM is an enzyme that catalyzes the epimerization of hexose sugars such as glucose and galactose. It is expressed in the cytoplasm and has a preference for galactose. The protein may be required for normal galactose metabolism by maintaining the equilibrium of alpha and beta anomers of galactose.</p> <p>Alias Symbols: BLOCK 25, IBD1, BLOCK25</p> <p>Protein Size: 342</p>
Molecular Weight:	38 kDa
Gene ID:	130589
NCBI Accession:	NM_138801 , NP_620156
UniProt:	Q96C23

Application Details

Application Notes:	Optimal working dilutions should be determined experimentally by the investigator.
Comment:	Antigen size: 342 AA
Restrictions:	For Research Use only

Handling

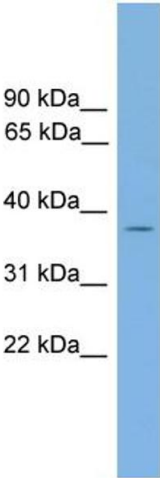
Format:	Liquid
Concentration:	Lot specific
Buffer:	Liquid. Purified antibody supplied in 1x PBS buffer with 0.09 % (w/v) sodium azide and 2 % sucrose.
Preservative:	Sodium azide
Precaution of Use:	This product contains Sodium azide: a POISONOUS AND HAZARDOUS SUBSTANCE which should be handled by trained staff only.
Handling Advice:	Avoid repeated freeze-thaw cycles.
Storage:	-20 °C
Storage Comment:	For short term use, store at 2-8°C up to 1 week. For long term storage, store at -20°C in small aliquots to prevent freeze-thaw cycles.



Western Blotting

Image 1. WB Suggested Anti-GALM Antibody Titration:
0.2-1 ug/ml

Positive Control: Human kidney



Rabbit Anti-GALM Antibody
Catalog Number: ARP52649
Lot Number: QC28868
Lane: Fetal Kidney Lysate

Antibody Titration: 1.0µg/ml
Gel Concentration: 12%

Western Blotting

Image 2. WB Suggested Anti-GALM
Antibody Titration: 0.2-1 µg/mL
Positive Control: Human kidney