

Datasheet for ABIN2785041
anti-ABRA antibody (Middle Region)[Go to Product page](#)

2 Images

Overview

Quantity:	100 µL
Target:	ABRA
Binding Specificity:	Middle Region
Reactivity:	Human, Mouse, Rat, Cow, Dog, Horse, Pig, Rabbit, Guinea Pig, Zebrafish (Danio rerio)
Host:	Rabbit
Clonality:	Polyclonal
Conjugate:	This ABRA antibody is un-conjugated
Application:	Western Blotting (WB)

Product Details

Immunogen:	The immunogen is a synthetic peptide directed towards the middle region of human ABRA
Sequence:	QWADEHIQSQ KLNPFSEEFY YELAMSTRLLH KGDEGYGRPK EGTKTAERAK
Predicted Reactivity:	Cow: 100%, Dog: 100%, Guinea Pig: 93%, Horse: 100%, Human: 100%, Mouse: 100%, Pig: 100%, Rabbit: 100%, Rat: 100%, Zebrafish: 93%
Characteristics:	This is a rabbit polyclonal antibody against ABRA. It was validated on Western Blot using a cell lysate as a positive control.
Purification:	Affinity Purified

Target Details

Target:	ABRA
---------	------

Target Details

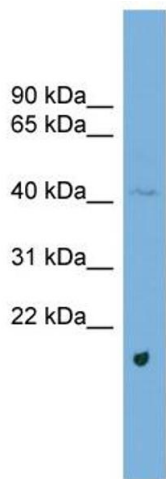
Alternative Name:	ABRA (ABRA Products)
Background:	<p>ABRA acts as an activator of serum response factor (SRF)-dependent transcription possibly by inducing nuclear translocation of MKL1 or MKL2 and through a mechanism requiring Rho-actin signaling.</p> <p>Alias Symbols: STARS</p> <p>Protein Interaction Partner: ABLIM2, ABLIM3, ABLIM1, ACTA1, ACTB, ACTC1,</p> <p>Protein Size: 381</p>
Molecular Weight:	43 kDa
Gene ID:	137735
NCBI Accession:	NM_139166 , NP_631905
UniProt:	Q8N0Z2
Pathways:	Protein targeting to Nucleus

Application Details

Application Notes:	Optimal working dilutions should be determined experimentally by the investigator.
Comment:	Antigen size: 381 AA
Restrictions:	For Research Use only

Handling

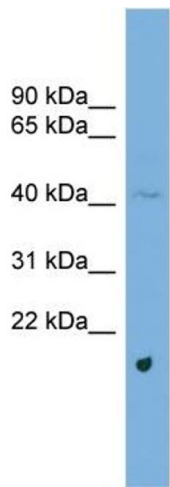
Format:	Liquid
Concentration:	Lot specific
Buffer:	Liquid. Purified antibody supplied in 1x PBS buffer with 0.09 % (w/v) sodium azide and 2 % sucrose.
Preservative:	Sodium azide
Precaution of Use:	This product contains Sodium azide: a POISONOUS AND HAZARDOUS SUBSTANCE which should be handled by trained staff only.
Handling Advice:	Avoid repeated freeze-thaw cycles.
Storage:	-20 °C
Storage Comment:	For short term use, store at 2-8°C up to 1 week. For long term storage, store at -20°C in small aliquots to prevent freeze-thaw cycles.



Western Blotting

Image 1. WB Suggested Anti-ABRA Antibody Titration:
0.2-1 ug/ml

Positive Control: Human Lung



Rabbit Anti-ABRA Antibody
Catalog Number: ARP52674
Lot Number: QC28877
Lane: Fetal Lung Lysate

Antibody Titration: 1.0µg/ml
Gel Concentration: 12%

Western Blotting

Image 2. WB Suggested Anti-ABRA
Antibody Titration: 0.2-1 µg/mL
Positive Control: Human Lung