



[Go to Product page](#)

Datasheet for ABIN2785049
anti-LRRC28 antibody (N-Term)

1 Image

Overview

Quantity:	100 µL
Target:	LRRC28
Binding Specificity:	N-Term
Reactivity:	Human, Mouse, Rat, Guinea Pig, Horse, Cow, Dog, Rabbit, Zebrafish (Danio rerio)
Host:	Rabbit
Clonality:	Polyclonal
Conjugate:	This LRRC28 antibody is un-conjugated
Application:	Western Blotting (WB)

Product Details

Immunogen:	The immunogen is a synthetic peptide directed towards the N terminal region of human LRRC28
Sequence:	KDEGLQYLER LYMKRNSLTS LPENLAQKLP NLVELYLHSN NIVVVPEAIG
Predicted Reactivity:	Cow: 100%, Dog: 100%, Guinea Pig: 100%, Horse: 100%, Human: 100%, Mouse: 100%, Rabbit: 100%, Rat: 100%, Zebrafish: 86%
Characteristics:	This is a rabbit polyclonal antibody against LRRC28. It was validated on Western Blot using a cell lysate as a positive control.
Purification:	Affinity Purified

Target Details

Target:	LRRC28
---------	--------

Target Details

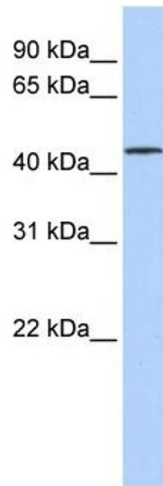
Alternative Name:	LRRC28 (LRRC28 Products)
Background:	LRRC28 contains 11 LRR (leucine-rich) repeats. The function of the LRRC28 protein is not known. Alias Symbols: FLJ34269, FLJ45242, MGC24976 Protein Interaction Partner: UBC, Protein Size: 367
Molecular Weight:	42 kDa
Gene ID:	123355
NCBI Accession:	NM_144598 , NP_653199
UniProt:	Q86X40

Application Details

Application Notes:	Optimal working dilutions should be determined experimentally by the investigator.
Comment:	Antigen size: 367 AA
Restrictions:	For Research Use only

Handling

Format:	Liquid
Concentration:	Lot specific
Buffer:	Liquid. Purified antibody supplied in 1x PBS buffer with 0.09 % (w/v) sodium azide and 2 % sucrose.
Preservative:	Sodium azide
Precaution of Use:	This product contains Sodium azide: a POISONOUS AND HAZARDOUS SUBSTANCE which should be handled by trained staff only.
Handling Advice:	Avoid repeated freeze-thaw cycles.
Storage:	-20 °C
Storage Comment:	For short term use, store at 2-8°C up to 1 week. For long term storage, store at -20°C in small aliquots to prevent freeze-thaw cycles.



Western Blotting

Image 1. WB Suggested Anti-LRRC28 Antibody Titration:

0.2-1 ug/ml

ELISA Titer: 1:312500

Positive Control: Jurkat cell lysate