



[Go to Product page](#)

Datasheet for ABIN2785055  
**anti-CYB5D1 antibody (Middle Region)**

1 Image

Overview

Quantity:	100 µL
Target:	CYB5D1
Binding Specificity:	Middle Region
Reactivity:	Human, Mouse, Cow, Dog, Guinea Pig, Horse, Rabbit, Rat, Saccharomyces cerevisiae
Host:	Rabbit
Clonality:	Polyclonal
Conjugate:	This CYB5D1 antibody is un-conjugated
Application:	Western Blotting (WB)

Product Details

Immunogen:	The immunogen is a synthetic peptide directed towards the middle region of human CYB5D1
Sequence:	KYEGKNLNMD FTLEENGIRD EEEFDYLSM DGLHTPAIL LYFNDDLTEL
Predicted Reactivity:	Cow: 79%, Dog: 93%, Guinea Pig: 93%, Horse: 92%, Human: 100%, Mouse: 100%, Rabbit: 93%, Rat: 100%, Yeast: 82%
Characteristics:	This is a rabbit polyclonal antibody against CYB5D1. It was validated on Western Blot using a cell lysate as a positive control.
Purification:	Affinity Purified

Target Details

Target:	CYB5D1
---------	--------

## Target Details

---

Alternative Name:	CYB5D1 ( <a href="#">CYB5D1 Products</a> )
Background:	The function of this protein remains unknown. Alias Symbols: FLJ32499 Protein Interaction Partner: DCUN1D1, Protein Size: 228
Molecular Weight:	27 kDa
Gene ID:	124637
NCBI Accession:	<a href="#">NM_144607</a> , <a href="#">NP_653208</a>
UniProt:	<a href="#">Q6P9G0</a>

## Application Details

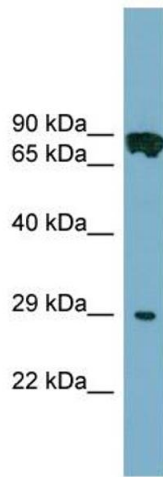
---

Application Notes:	Optimal working dilutions should be determined experimentally by the investigator.
Comment:	Antigen size: 228 AA
Restrictions:	For Research Use only

## Handling

---

Format:	Liquid
Concentration:	Lot specific
Buffer:	Liquid. Purified antibody supplied in 1x PBS buffer with 0.09 % (w/v) sodium azide and 2 % sucrose.
Preservative:	Sodium azide
Precaution of Use:	This product contains Sodium azide: a POISONOUS AND HAZARDOUS SUBSTANCE which should be handled by trained staff only.
Handling Advice:	Avoid repeated freeze-thaw cycles.
Storage:	-20 °C
Storage Comment:	For short term use, store at 2-8°C up to 1 week. For long term storage, store at -20°C in small aliquots to prevent freeze-thaw cycles.



### Western Blotting

#### Image 1. WB Suggested Anti-CYB5D1 Antibody Titration:

0.2-1 ug/ml

**Positive Control:** COLO205 cell lysate