

Datasheet for ABIN2785065  
**anti-WDR66 antibody (N-Term)**[Go to Product page](#)

## 1 Image

## Overview

Quantity:	100 µL
Target:	WDR66
Binding Specificity:	N-Term
Reactivity:	Human, Dog, Pig
Host:	Rabbit
Clonality:	Polyclonal
Conjugate:	This WDR66 antibody is un-conjugated
Application:	Western Blotting (WB)

## Product Details

Immunogen:	The immunogen is a synthetic peptide directed towards the N terminal region of human WDR66
Sequence:	GELEEKTRDM PQDELGQERR DLEPENREEG QERRVSDIQS KAGISRESLV
Predicted Reactivity:	Dog: 100%, Human: 100%, Pig: 85%
Characteristics:	This is a rabbit polyclonal antibody against WDR66. It was validated on Western Blot using a cell lysate as a positive control.
Purification:	Affinity Purified

## Target Details

Target:	WDR66
Alternative Name:	WDR66 ( <a href="#">WDR66 Products</a> )

## Target Details

Background: WDR66 contains 9 WD repeats. The functions of WDR66 remain unknown.  
Alias Symbols: FLJ39783, MGC33630  
Protein Interaction Partner: UBC,  
Protein Size: 1149

Molecular Weight: 130 kDa

Gene ID: 144406

NCBI Accession: [NM\\_144668](#), [NP\\_653269](#)

UniProt: [Q8TBY9](#)

## Application Details

Application Notes: Optimal working dilutions should be determined experimentally by the investigator.

Comment: Antigen size: 1149 AA

Restrictions: For Research Use only

## Handling

Format: Liquid

Concentration: Lot specific

Buffer: Liquid. Purified antibody supplied in 1x PBS buffer with 0.09 % (w/v) sodium azide and 2 % sucrose.

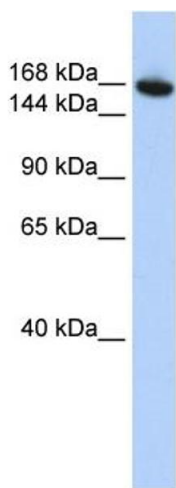
Preservative: Sodium azide

Precaution of Use: This product contains Sodium azide: a POISONOUS AND HAZARDOUS SUBSTANCE which should be handled by trained staff only.

Handling Advice: Avoid repeated freeze-thaw cycles.

Storage: -20 °C

Storage Comment: For short term use, store at 2-8°C up to 1 week. For long term storage, store at -20°C in small aliquots to prevent freeze-thaw cycles.



Western Blotting

**Image 1. WB Suggested Anti-WDR66 Antibody Titration:**

0.2-1 ug/ml

**ELISA Titer:** 1:62500

**Positive Control:** HepG2 cell lysate