

Datasheet for ABIN2785068

anti-CCDC42 antibody (Middle Region)



[Go to Product page](#)

1 Validation

1 Image

2 Publications

Overview

Quantity:	100 µL
Target:	CCDC42
Binding Specificity:	Middle Region
Reactivity:	Human, Mouse, Rat, Cow, Dog, Guinea Pig, Horse, Rabbit
Host:	Rabbit
Clonality:	Polyclonal
Conjugate:	This CCDC42 antibody is un-conjugated
Application:	Western Blotting (WB)

Product Details

Immunogen:	The immunogen is a synthetic peptide directed towards the middle region of Rat Ccdc42
Sequence:	ENSEFEEIHE VIARYKTLVS MHHDLMSAQ EGQEKIEHAK ARLARYMEEK
Predicted Reactivity:	Cow: 100%, Dog: 100%, Guinea Pig: 100%, Horse: 100%, Human: 100%, Mouse: 100%, Rabbit: 93%, Rat: 93%
Characteristics:	This is a rabbit polyclonal antibody against Ccdc42. It was validated on Western Blot.
Purification:	Affinity Purified

Target Details

Target:	CCDC42
Alternative Name:	Ccdc42 (CCDC42 Products)

Target Details

Background: The function of this protein remains unknown.
Alias Symbols: RGD1565925
Protein Size: 316

Molecular Weight: 34 kDa

Gene ID: 303234

NCBI Accession: [NM_001107009](#), [NP_001100479](#)

UniProt: [D3ZAZ8](#)

Application Details

Application Notes: Optimal working dilutions should be determined experimentally by the investigator.

Comment: Antigen size: 316 AA

Restrictions: For Research Use only

Handling

Format: Liquid

Concentration: Lot specific

Buffer: Liquid. Purified antibody supplied in 1x PBS buffer with 0.09 % (w/v) sodium azide and 2 % sucrose.

Preservative: Sodium azide

Precaution of Use: This product contains Sodium azide: a POISONOUS AND HAZARDOUS SUBSTANCE which should be handled by trained staff only.

Handling Advice: Avoid repeated freeze-thaw cycles.

Storage: -20 °C

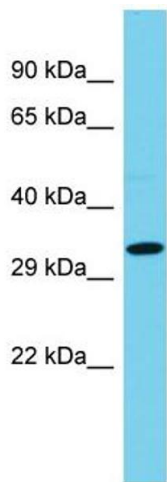
Storage Comment: For short term use, store at 2-8°C up to 1 week. For long term storage, store at -20°C in small aliquots to prevent freeze-thaw cycles.

Publications

Product cited in: Wu, Yu, Liu, Wang, Huang, Lu, Chen, Li, Liu: "Essential Role of CFAP53 in Sperm Flagellum Biogenesis." in: **Frontiers in cell and developmental biology**, Vol. 9, pp. 676910, (2021) ([PubMed](#)).

Tapia Contreras, Hoyer-Fender: "CCDC42 Localizes to Manchette, HTCA and Tail and Interacts With ODF1 and ODF2 in the Formation of the Male Germ Cell Cytoskeleton." in: **Frontiers in cell and developmental biology**, Vol. 7, pp. 151 ([PubMed](#)).

Images



Western Blotting

Image 1. Host: Rabbit
Target Name: Ccdc42
Sample Tissue: Rat Pancreas lysates
Antibody Dilution: 1.0 µg/mL



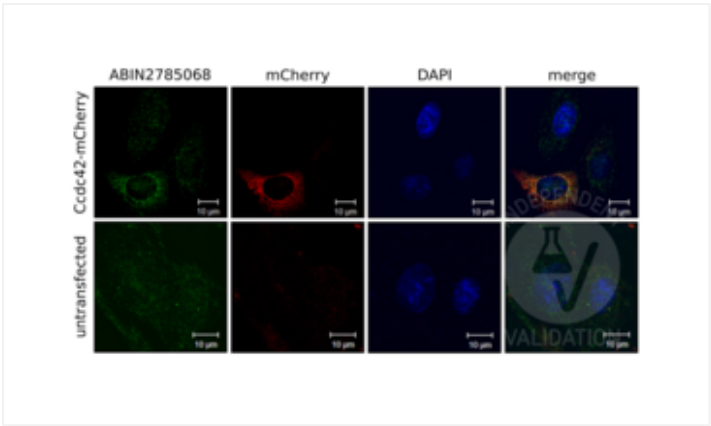
Successfully validated (Immunocytochemistry (ICC))

by [Developmental Biology, Johann-Friedrich-Blumenbach-Institute for Zoology and Anthropology, Georg-August-University of Göttingen](#)

Report Number: 103398

Date: Oct 12 2018

Target:	CCDC42
Lot Number:	QC28887-41199
Method validated:	Immunocytochemistry (ICC)
Positive Control:	NIH/3T3 cells transfected with Ccdc42-mCherry expression vector
Negative Control:	Non-transfected NIH/3T3 cells
Notes:	Passed. ABIN2785068 specifically detects Ccdc42-Cherry when exogenously expressed. Background staining is low.
Primary Antibody:	ABIN2785068
Secondary Antibody:	goat anti-rabbit 488 antibody (MoBiotec, MFP-A1008, lot 2806F058)
Protocol:	<ul style="list-style-type: none"> • Grow NIH/3T3 cells (ATCC, CRL-1658) in DMEM+GlutaMAX (Gibco, 10567-014, lot 1922818) supplemented with fetal bovine serum (Gibco, 10500-064, lot 08FO477K) and Pen/Strep (Gibco, 15140-122, lot 1924797) at 37°C and 5% CO₂ to 70% confluency. • Transfect cells with Ccdc42 tagged mCherry (Ccdc42-Cherry) expression vector using EndofectinMax (GeneCopoeia) following the manufacturer's instructions. • Grow cells for 24h. • Fix cells in methanol for 10min at -20°C followed by incubation in 0.3% Triton X-100 for 10min at 4°C. • Block cells in PBS containing 1% bovine serum albumin and 0.5% Tween-20 (PBT) for 1h at RT. • Incubate cells with primary rabbit anti-Ccdc42 antibody (antibodies-online, ABIN2785068, QC28887-41199) diluted 1:100 in PBS for 1h at 37°C. • Wash cells 3x 5min with 1x PBS. • Incubate cells with secondary goat anti-rabbit 488 antibody (MoBiotec, MFP-A1008, lot 2806F058) diluted 1:300 for 1h at 37°C in PBS. • DNA was counterstained with DAPI (4', 6-Diamidino-2-phenylindole; Sigma, D-9542). • Image acquisition on Zeiss LSM 510 confocal microscope and processing using Adobe Photoshop 5.0.



Validation image no. 1 for anti-Coiled-Coil Domain Containing 42 (CCDC42) (Middle Region) antibody (ABIN2785068)

Cells were transfected with Ccdc42 tagged with mCherry (red) and incubated with ABIN2785068 (green). The pictures on the right show the red and green channels merged with DAPI counterstain (blue).