



[Go to Product page](#)

Datasheet for ABIN2785070

anti-C1orf92 antibody (Middle Region)

1 Image

Overview

Quantity:	100 µL
Target:	C1orf92 (LRRC71)
Binding Specificity:	Middle Region
Reactivity:	Human, Mouse, Rat, Dog, Rabbit, Cow, Horse, Pig
Host:	Rabbit
Clonality:	Polyclonal
Conjugate:	This C1orf92 antibody is un-conjugated
Application:	Western Blotting (WB)

Product Details

Immunogen:	The immunogen is a synthetic peptide directed towards the middle region of human C1orf92
Sequence:	VDKTDKTQTM KTPKGLGKKK EKSWELAKKE EKLGSQSPT QGTPKKEDAT
Predicted Reactivity:	Cow: 86%, Dog: 100%, Horse: 79%, Human: 100%, Mouse: 100%, Pig: 93%, Rabbit: 100%, Rat: 100%
Characteristics:	This is a rabbit polyclonal antibody against C1orf92. It was validated on Western Blot using a cell lysate as a positive control.
Purification:	Affinity Purified

Target Details

Target:	C1orf92 (LRRC71)
---------	------------------

Target Details

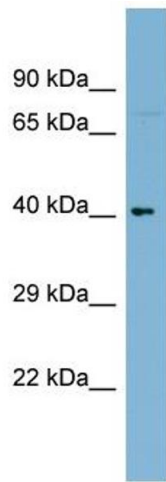
Alternative Name:	C1orf92 (LRRC71 Products)
Background:	The function of this protein remains unknown. Alias Symbols: FLJ32884, MGC45468, RP11-356J7.1, C1orf92 Protein Size: 354
Molecular Weight:	39 kDa
Gene ID:	149499
NCBI Accession:	NM_144702 , NP_653303
UniProt:	Q8N4P6

Application Details

Application Notes:	Optimal working dilutions should be determined experimentally by the investigator.
Comment:	Antigen size: 354 AA
Restrictions:	For Research Use only

Handling

Format:	Liquid
Concentration:	Lot specific
Buffer:	Liquid. Purified antibody supplied in 1x PBS buffer with 0.09 % (w/v) sodium azide and 2 % sucrose.
Preservative:	Sodium azide
Precaution of Use:	This product contains Sodium azide: a POISONOUS AND HAZARDOUS SUBSTANCE which should be handled by trained staff only.
Handling Advice:	Avoid repeated freeze-thaw cycles.
Storage:	-20 °C
Storage Comment:	For short term use, store at 2-8°C up to 1 week. For long term storage, store at -20°C in small aliquots to prevent freeze-thaw cycles.



Western Blotting

Image 1. WB Suggested Anti-C1orf92 Antibody Titration:

0.2-1 ug/ml

Positive Control: THP-1 cell lysate