

Datasheet for ABIN2785107
anti-SPATA5 antibody (Middle Region)[Go to Product page](#)

1 Image

Overview

Quantity:	100 µL
Target:	SPATA5
Binding Specificity:	Middle Region
Reactivity:	Human, Mouse, Rat, Pig, Dog, Guinea Pig, Horse, Rabbit
Host:	Rabbit
Clonality:	Polyclonal
Conjugate:	This SPATA5 antibody is un-conjugated
Application:	Western Blotting (WB)

Product Details

Immunogen:	The immunogen is a synthetic peptide directed towards the middle region of human SPATA5
Sequence:	ALLALEEDIQ ANLIMKRHFT QALSTVTPRI PESLRRFYED YQEKSGLHTL
Predicted Reactivity:	Dog: 92%, Guinea Pig: 93%, Horse: 93%, Human: 100%, Mouse: 100%, Pig: 100%, Rabbit: 93%, Rat: 100%
Characteristics:	This is a rabbit polyclonal antibody against SPATA5. It was validated on Western Blot using a cell lysate as a positive control.
Purification:	Affinity Purified

Target Details

Target:	SPATA5
---------	--------

Target Details

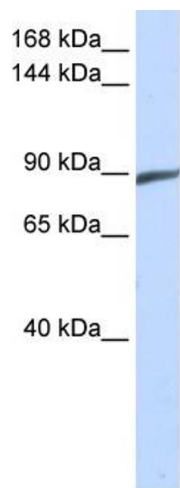
Alternative Name:	SPATA5 (SPATA5 Products)
Background:	<p>SPATA5 may be involved in morphological and functional mitochondrial transformations during spermatogenesis.</p> <p>Alias Symbols: AFG2, SPAF</p> <p>Protein Interaction Partner: UBC,</p> <p>Protein Size: 893</p>
Molecular Weight:	98 kDa
Gene ID:	166378
NCBI Accession:	NM_145207 , NP_660208
UniProt:	Q8NB90

Application Details

Application Notes:	Optimal working dilutions should be determined experimentally by the investigator.
Comment:	Antigen size: 893 AA
Restrictions:	For Research Use only

Handling

Format:	Liquid
Concentration:	Lot specific
Buffer:	Liquid. Purified antibody supplied in 1x PBS buffer with 0.09 % (w/v) sodium azide and 2 % sucrose.
Preservative:	Sodium azide
Precaution of Use:	This product contains Sodium azide: a POISONOUS AND HAZARDOUS SUBSTANCE which should be handled by trained staff only.
Handling Advice:	Avoid repeated freeze-thaw cycles.
Storage:	-20 °C
Storage Comment:	For short term use, store at 2-8°C up to 1 week. For long term storage, store at -20°C in small aliquots to prevent freeze-thaw cycles.



Western Blotting

Image 1. WB Suggested Anti-SPATA5 Antibody Titration:

0.2-1 ug/ml

ELISA Titer: 1:62500

Positive Control: 293T cell lysate