

Datasheet for ABIN2785116
anti-CCDC127 antibody (N-Term)

2 Images

[Go to Product page](#)

Overview

Quantity:	100 µL
Target:	CCDC127
Binding Specificity:	N-Term
Reactivity:	Human, Mouse, Rat, Cow, Horse, Dog, Guinea Pig, Pig, Rabbit
Host:	Rabbit
Clonality:	Polyclonal
Conjugate:	This CCDC127 antibody is un-conjugated
Application:	Western Blotting (WB)

Product Details

Immunogen:	The immunogen is a synthetic peptide directed towards the N terminal region of human CCDC127
Sequence:	LGLAAFRWIW SRESQKEVEK EREAYRRRTA AFQQDLEAKY HAMISENRRRA
Predicted Reactivity:	Cow: 86%, Dog: 93%, Guinea Pig: 79%, Horse: 100%, Human: 100%, Mouse: 100%, Pig: 86%, Rabbit: 93%, Rat: 100%
Characteristics:	This is a rabbit polyclonal antibody against CCDC127. It was validated on Western Blot using a cell lysate as a positive control.
Purification:	Affinity Purified

Target Details

Target:	CCDC127
---------	---------

Target Details

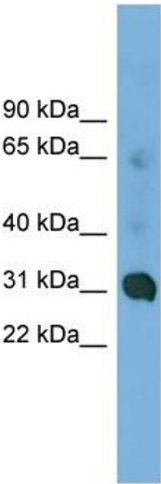
Alternative Name:	CCDC127 (CCDC127 Products)
Background:	The function of this protein remains unknown. Alias Symbols: FLJ25701 Protein Interaction Partner: RNF11, UBC, Protein Size: 260
Molecular Weight:	31 kDa
Gene ID:	133957
NCBI Accession:	NM_145265 , NP_660308
UniProt:	Q96BQ5

Application Details

Application Notes:	Optimal working dilutions should be determined experimentally by the investigator.
Comment:	Antigen size: 260 AA
Restrictions:	For Research Use only

Handling

Format:	Liquid
Concentration:	Lot specific
Buffer:	Liquid. Purified antibody supplied in 1x PBS buffer with 0.09 % (w/v) sodium azide and 2 % sucrose.
Preservative:	Sodium azide
Precaution of Use:	This product contains Sodium azide: a POISONOUS AND HAZARDOUS SUBSTANCE which should be handled by trained staff only.
Handling Advice:	Avoid repeated freeze-thaw cycles.
Storage:	-20 °C
Storage Comment:	For short term use, store at 2-8°C up to 1 week. For long term storage, store at -20°C in small aliquots to prevent freeze-thaw cycles.

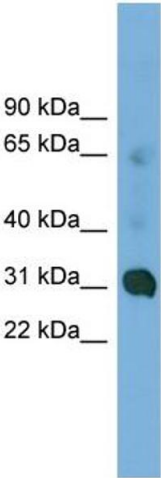


Rabbit Anti-CCDC127 Antibody
Catalog Number: ARP52839
Lot Number: QC25487
Lane: COLO205 Cell Lysate

Antibody Titration: 1.0 µg/ml
Gel Concentration: 12%

Western Blotting

Image 1. WB Suggested Anti-CCDC127
Antibody Titration: 0.2-1 µg/mL
Positive Control: COLO205 cell lysate



Western Blotting

Image 2. WB Suggested Anti-CCDC127 Antibody Titration:
0.2-1 µg/ml
Positive Control: COLO205 cell lysate