

Datasheet for ABIN2785124
anti-WFDC5 antibody (N-Term)



[Go to Product page](#)

1 Image

Overview

Quantity:	100 µL
Target:	WFDC5
Binding Specificity:	N-Term
Reactivity:	Human, Cow, Guinea Pig, Pig
Host:	Rabbit
Clonality:	Polyclonal
Conjugate:	This WFDC5 antibody is un-conjugated
Application:	Western Blotting (WB)

Product Details

Immunogen:	The immunogen is a synthetic peptide directed towards the N terminal region of human WFDC5
Sequence:	MRTQSLLLLG ALLAVGSQLP AVFGRKKGEK SGGCPPDDGP CLLSVPDQCV
Predicted Reactivity:	Cow: 79%, Guinea Pig: 85%, Human: 100%, Pig: 86%
Characteristics:	This is a rabbit polyclonal antibody against WFDC5. It was validated on Western Blot using a cell lysate as a positive control.
Purification:	Affinity Purified

Target Details

Target:	WFDC5
---------	-------

Target Details

Alternative Name:	WFDC5 (WFDC5 Products)
Background:	<p>WFDC5 is a putative acid-stable proteinase inhibitor. This gene encodes a member of the WAP-type four-disulfide core (WFDC) domain family. Most WFDC proteins contain only one WFDC domain, and this encoded protein contains two WFDC domains. The WFDC domain, or WAP signature motif, contains eight cysteines forming four disulfide bonds at the core of the protein, and functions as a protease inhibitor. Most WFDC gene members are localized to chromosome 20q12-q13 in two clusters: centromeric and telomeric. This gene belongs to the centromeric cluster.</p> <p>Alias Symbols: PRG5, WAP1, dJ211D12.5</p> <p>Protein Interaction Partner: PDS5A, PDS5B, STAG2, STAG1, SMC3, SMC1A, RAD21,</p> <p>Protein Size: 123</p>
Molecular Weight:	11 kDa
Gene ID:	149708
NCBI Accession:	NM_145652 , NP_663627
UniProt:	Q8TCV5

Application Details

Application Notes:	Optimal working dilutions should be determined experimentally by the investigator.
Comment:	Antigen size: 123 AA
Restrictions:	For Research Use only

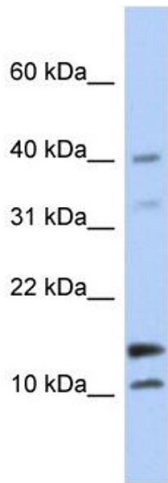
Handling

Format:	Liquid
Concentration:	Lot specific
Buffer:	Liquid. Purified antibody supplied in 1x PBS buffer with 0.09 % (w/v) sodium azide and 2 % sucrose.
Preservative:	Sodium azide
Precaution of Use:	This product contains Sodium azide: a POISONOUS AND HAZARDOUS SUBSTANCE which should be handled by trained staff only.
Handling Advice:	Avoid repeated freeze-thaw cycles.

Handling

Storage:	-20 °C
Storage Comment:	For short term use, store at 2-8°C up to 1 week. For long term storage, store at -20°C in small aliquots to prevent freeze-thaw cycles.

Images



Western Blotting

Image 1. WB Suggested Anti-WFDC5 Antibody Titration:

0.2-1 ug/ml

ELISA Titer: 1:1562500

Positive Control: Human brain