

Datasheet for ABIN2785139  
**anti-FRMD6 antibody (C-Term)**[Go to Product page](#)

## 1 Image

## Overview

Quantity:	100 µL
Target:	FRMD6
Binding Specificity:	C-Term
Reactivity:	Human, Mouse, Rat, Cow, Guinea Pig, Horse, Rabbit, Dog
Host:	Rabbit
Clonality:	Polyclonal
Conjugate:	This FRMD6 antibody is un-conjugated
Application:	Western Blotting (WB)

## Product Details

Immunogen:	The immunogen is a synthetic peptide directed towards the C-terminal region of Rat Frmd6
Sequence:	PQTICRKPKT STDRHSLSLD DIRLYQKDFL RIAGLCQDTA QSYTFGCGHE
Predicted Reactivity:	Cow: 100%, Dog: 100%, Guinea Pig: 100%, Horse: 92%, Human: 100%, Mouse: 100%, Rabbit: 100%, Rat: 100%
Characteristics:	This is a rabbit polyclonal antibody against Frmd6. It was validated on Western Blot.
Purification:	Affinity Purified

## Target Details

Target:	FRMD6
Alternative Name:	Frmd6 ( <a href="#">FRMD6 Products</a> )

## Target Details

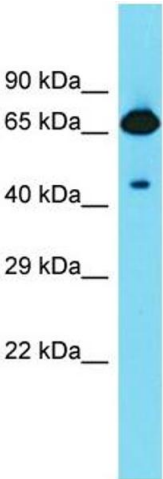
Background:	Frmd6 is a putative structural protein, presence of FERM domain suggests it may be a member of the ezrin-radixin-moesin (ERM) protein family Alias Symbols: - Protein Size: 622
Molecular Weight:	71 kDa
Gene ID:	257646
NCBI Accession:	<a href="#">XM_001080473</a> , <a href="#">XP_001080473</a>
UniProt:	<a href="#">F1LR29</a>

## Application Details

Application Notes:	Optimal working dilutions should be determined experimentally by the investigator.
Comment:	Antigen size: 622 AA
Restrictions:	For Research Use only

## Handling

Format:	Liquid
Concentration:	Lot specific
Buffer:	Liquid. Purified antibody supplied in 1x PBS buffer with 0.09 % (w/v) sodium azide and 2 % sucrose.
Preservative:	Sodium azide
Precaution of Use:	This product contains Sodium azide: a POISONOUS AND HAZARDOUS SUBSTANCE which should be handled by trained staff only.
Handling Advice:	Avoid repeated freeze-thaw cycles.
Storage:	-20 °C
Storage Comment:	For short term use, store at 2-8°C up to 1 week. For long term storage, store at -20°C in small aliquots to prevent freeze-thaw cycles.



Western Blotting

**Image 1.** Host: Rabbit

Target Name: Frmd6

Sample Tissue: Rat Stomach lysates

Antibody Dilution: 1.0 µg/mL