



[Go to Product page](#)

Datasheet for ABIN2785143

## anti-C16ORF46 antibody (N-Term)

1 Image

1 Publication

### Overview

Quantity:	100 µL
Target:	C16ORF46
Binding Specificity:	N-Term
Reactivity:	Human
Host:	Rabbit
Clonality:	Polyclonal
Conjugate:	This C16ORF46 antibody is un-conjugated
Application:	Western Blotting (WB)

### Product Details

Immunogen:	The immunogen is a synthetic peptide directed towards the N terminal region of human C16orf46
Sequence:	LSHWLQTKP PTEGGPEKDQ SSPSQQAAP QGPSTASRAI SDICFPTYFR
Predicted Reactivity:	Human: 100%
Characteristics:	This is a rabbit polyclonal antibody against C16orf46. It was validated on Western Blot using a cell lysate as a positive control.
Purification:	Affinity Purified

### Target Details

Target:	C16ORF46
---------	----------

## Target Details

---

Alternative Name:	C16orf46 ( <a href="#">C16ORF46 Products</a> )
Background:	The exact function of C16orf46 remains unknown. Alias Symbols: FLJ32702 Protein Size: 395
Molecular Weight:	43 kDa
Gene ID:	123775
NCBI Accession:	<a href="#">NM_152337</a> , <a href="#">NP_689550</a>
UniProt:	<a href="#">Q6P387</a>

## Application Details

---

Application Notes:	Optimal working dilutions should be determined experimentally by the investigator.
Comment:	Antigen size: 395 AA
Restrictions:	For Research Use only

## Handling

---

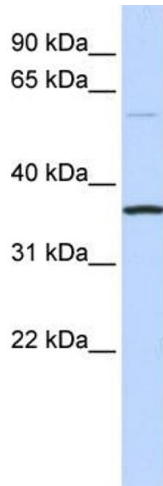
Format:	Liquid
Concentration:	Lot specific
Buffer:	Liquid. Purified antibody supplied in 1x PBS buffer with 0.09 % (w/v) sodium azide and 2 % sucrose.
Preservative:	Sodium azide
Precaution of Use:	This product contains Sodium azide: a POISONOUS AND HAZARDOUS SUBSTANCE which should be handled by trained staff only.
Handling Advice:	Avoid repeated freeze-thaw cycles.
Storage:	-20 °C
Storage Comment:	For short term use, store at 2-8°C up to 1 week. For long term storage, store at -20°C in small aliquots to prevent freeze-thaw cycles.

## Publications

---

Product cited in:	Li, Wu, Jiang, Liu, Wu, Inagaki, Izawa, Mizisin, Engvall, Shelton: "Non-pathogenic protein aggregates in skeletal muscle in MLF1 transgenic mice." in: <b>Journal of the neurological</b>
-------------------	---

Images



**Western Blotting**

**Image 1. WB Suggested Anti-C16orf46 Antibody Titration:**

0.2-1 ug/ml

**ELISA Titer:** 1:1562500

**Positive Control:** Human brain