



[Go to Product page](#)

Datasheet for ABIN2785147

## anti-LSM12B antibody (Middle Region)

1 Image

1 Publication

### Overview

Quantity:	100 µL
Target:	LSM12B
Binding Specificity:	Middle Region
Reactivity:	Mouse, Rat, Human, Pig, Rabbit, Cow, Dog, Horse, Zebrafish (Danio rerio), Guinea Pig
Host:	Rabbit
Clonality:	Polyclonal
Conjugate:	This LSM12B antibody is un-conjugated
Application:	Western Blotting (WB)

### Product Details

Immunogen:	The immunogen is a synthetic peptide directed towards the middle region of human LSM12
Sequence:	PPYQVENCKG KEGSALSHVR KIVEKHFRDV ESQKILQRSQ AQQPQKEAAL
Predicted Reactivity:	Cow: 100%, Dog: 100%, Guinea Pig: 93%, Horse: 100%, Human: 100%, Mouse: 100%, Pig: 100%, Rabbit: 100%, Rat: 100%, Zebrafish: 79%
Characteristics:	This is a rabbit polyclonal antibody against LSM12. It was validated on Western Blot using a cell lysate as a positive control.
Purification:	Affinity Purified

### Target Details

Target:	LSM12B
---------	--------

## Target Details

---

Alternative Name:	LSM12 ( <a href="#">LSM12B Products</a> )
Background:	LSM12 belongs to the LSM12 family. The exact function of LSM12 is not known. Alias Symbols: FLJ30656, MGC104211, PNAS-135 Protein Interaction Partner: HUWE1, FUS, UBC, DDX6, SH3RF2, TARDBP, env, FN1, MDC1, HPDL, CAND1, DCUN1D1, COPS5, CUL3, GOLM1, DSTYK, Protein Size: 195
Molecular Weight:	22 kDa
Gene ID:	124801
NCBI Accession:	<a href="#">NM_152344</a> , <a href="#">NP_689557</a>
UniProt:	<a href="#">Q3MHD2</a>

## Application Details

---

Application Notes:	Optimal working dilutions should be determined experimentally by the investigator.
Comment:	Antigen size: 195 AA
Restrictions:	For Research Use only

## Handling

---

Format:	Liquid
Concentration:	Lot specific
Buffer:	Liquid. Purified antibody supplied in 1x PBS buffer with 0.09 % (w/v) sodium azide and 2 % sucrose.
Preservative:	Sodium azide
Precaution of Use:	This product contains Sodium azide: a POISONOUS AND HAZARDOUS SUBSTANCE which should be handled by trained staff only.
Handling Advice:	Avoid repeated freeze-thaw cycles.
Storage:	-20 °C
Storage Comment:	For short term use, store at 2-8°C up to 1 week. For long term storage, store at -20°C in small aliquots to prevent freeze-thaw cycles.

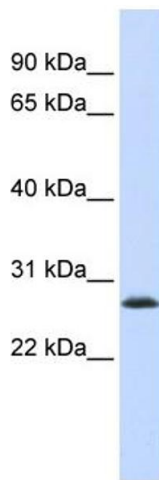
## Publications

---

Product cited in: Suzuki, Yoshitomo-Nakagawa, Maruyama, Suyama, Sugano: "Construction and characterization of a full length-enriched and a 5'-end-enriched cDNA library." in: **Gene**, Vol. 200 , Issue 1-2, pp. 149-56, (1997) ([PubMed](#)).

## Images

---



### Western Blotting

#### Image 1. WB Suggested Anti-LSM12 Antibody Titration:

0.2-1 ug/ml

**ELISA Titer:** 1:62500

**Positive Control:** 293T cell lysate