



[Go to Product page](#)

Datasheet for ABIN2785155
anti-C1ORF216 antibody (N-Term)

2 Images

Overview

Quantity:	100 µL
Target:	C1ORF216
Binding Specificity:	N-Term
Reactivity:	Rat, Human, Mouse, Horse, Cow, Guinea Pig
Host:	Rabbit
Clonality:	Polyclonal
Conjugate:	This C1ORF216 antibody is un-conjugated
Application:	Western Blotting (WB)

Product Details

Immunogen:	The immunogen is a synthetic peptide directed towards the N terminal region of human C1orf216
Sequence:	GRVEPILRRS SSESPSDNQA FQAPGSPEEG VRSPPEGAEI PGAEPEKMGG
Predicted Reactivity:	Cow: 93%, Guinea Pig: 93%, Horse: 100%, Human: 100%, Mouse: 100%, Rat: 100%
Characteristics:	This is a rabbit polyclonal antibody against C1orf216. It was validated on Western Blot.
Purification:	Affinity Purified

Target Details

Target:	C1ORF216
Alternative Name:	C1orf216 (C1ORF216 Products)

Target Details

Background: The function of C1orf216 remains unknown.
Alias Symbols: FLJ38984
Protein Interaction Partner: TPM3, TPM1, KRT31, KRT15, KRT13, CDR2, AES, CCDC158, LINC00521, AMOT, KRT40, CCDC114, USHBP1, CCDC136, TRIM54, NRBF2, MED4, GGA1, MYRIP, NUP62, MTUS2, RALBP1, NMI, KRT38, TRAF1, PSMC6, CEP170P1,
Protein Size: 229

Molecular Weight: 25 kDa

Gene ID: 127703

NCBI Accession: [NM_152374](#), [NP_689587](#)

UniProt: [Q8TAB5](#)

Application Details

Application Notes: Optimal working dilutions should be determined experimentally by the investigator.

Comment: Antigen size: 229 AA

Restrictions: For Research Use only

Handling

Format: Liquid

Concentration: Lot specific

Buffer: Liquid. Purified antibody supplied in 1x PBS buffer with 0.09 % (w/v) sodium azide and 2 % sucrose.

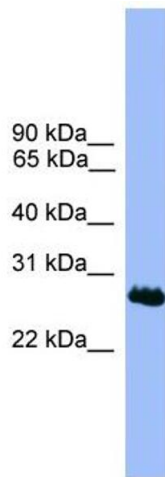
Preservative: Sodium azide

Precaution of Use: This product contains Sodium azide: a POISONOUS AND HAZARDOUS SUBSTANCE which should be handled by trained staff only.

Handling Advice: Avoid repeated freeze-thaw cycles.

Storage: -20 °C

Storage Comment: For short term use, store at 2-8°C up to 1 week. For long term storage, store at -20°C in small aliquots to prevent freeze-thaw cycles.



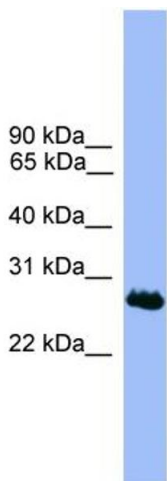
Western Blotting

Image 1. WB Suggested Anti-C1orf216 Antibody Titration:

0.2-1 ug/ml

ELISA Titer: 1:312500

Positive Control: MCF7 cell lysate



Rabbit Anti-C1orf216 Antibody

Catalog Number: ARP52922

Lot Number: QC28146

Lane: MCF7 Cell Lysate

Antibody Titration: 1.0µg/ml

Gel Concentration: 12%

Western Blotting

Image 2. WB Suggested Anti-C1orf216

Antibody Titration: 0.2-1 µg/mL ELISA Titer: 1:12500

Positive Control: MCF7 cell lysate