



[Go to Product page](#)

Datasheet for ABIN2785164

anti-PDCL2 antibody (N-Term)

1 Image

Overview

Quantity:	100 µL
Target:	PDCL2
Binding Specificity:	N-Term
Reactivity:	Human, Mouse, Rat, Rabbit, Cow, Dog, Horse, Pig
Host:	Rabbit
Clonality:	Polyclonal
Conjugate:	This PDCL2 antibody is un-conjugated
Application:	Western Blotting (WB)

Product Details

Immunogen:	The immunogen is a synthetic peptide directed towards the N-terminal region of Mouse Pdcl2
Sequence:	EKRLQEWKAL KKKQKFGELR EISGNQYVNE VTNAEKDLWV VIHLYRSSVP
Predicted Reactivity:	Cow: 100%, Dog: 100%, Horse: 100%, Human: 100%, Mouse: 100%, Pig: 93%, Rabbit: 100%, Rat: 100%
Characteristics:	This is a rabbit polyclonal antibody against Pdcl2. It was validated on Western Blot.
Purification:	Affinity Purified

Target Details

Target:	PDCL2
Alternative Name:	Pdcl2 (PDCL2 Products)

Target Details

Background: Pdcl2 may play a role in germ cell maturation.
Alias Symbols: 1700010B22Rik, 1700016K07Rik, Mgcphlp, Tphlp
Protein Size: 240

Molecular Weight: 28 kDa

Gene ID: 79455

NCBI Accession: [NM_023508](#), [NP_075997](#)

UniProt: [Q78Y63](#)

Application Details

Application Notes: Optimal working dilutions should be determined experimentally by the investigator.

Comment: Antigen size: 240 AA

Restrictions: For Research Use only

Handling

Format: Liquid

Concentration: Lot specific

Buffer: Liquid. Purified antibody supplied in 1x PBS buffer with 0.09 % (w/v) sodium azide and 2 % sucrose.

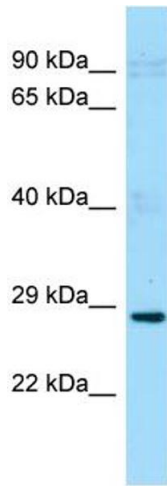
Preservative: Sodium azide

Precaution of Use: This product contains Sodium azide: a POISONOUS AND HAZARDOUS SUBSTANCE which should be handled by trained staff only.

Handling Advice: Avoid repeated freeze-thaw cycles.

Storage: -20 °C

Storage Comment: For short term use, store at 2-8°C up to 1 week. For long term storage, store at -20°C in small aliquots to prevent freeze-thaw cycles.



Western Blotting

Image 1. WB Suggested Anti-Pdcl2 Antibody Titration: 1.0 ug/ml Positive Control: Mouse Testis