

Datasheet for ABIN2785165
anti-TRAM1L1 antibody (Middle Region)[Go to Product page](#)

1 Image

Overview

Quantity:	100 µL
Target:	TRAM1L1
Binding Specificity:	Middle Region
Reactivity:	Human, Dog, Rabbit
Host:	Rabbit
Clonality:	Polyclonal
Conjugate:	This TRAM1L1 antibody is un-conjugated
Application:	Western Blotting (WB)

Product Details

Immunogen:	The immunogen is a synthetic peptide directed towards the middle region of human TRAM1L1
Sequence:	LWAIVFILGR LVTLIVSVLT VGFHLAGSQN RNPDAITGNV NVLAAKIAVL
Predicted Reactivity:	Dog: 79%, Human: 100%, Rabbit: 86%
Characteristics:	This is a rabbit polyclonal antibody against TRAM1L1. It was validated on Western Blot using a cell lysate as a positive control.
Purification:	Affinity Purified

Target Details

Target:	TRAM1L1
Alternative Name:	TRAM1L1 (TRAM1L1 Products)

Target Details

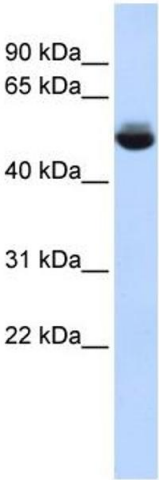
Background:	TRAM1L1 is stimulatory or required for the translocation of secretory proteins across the ER membrane. Alias Symbols: MGC26568 Protein Size: 369
Molecular Weight:	42 kDa
Gene ID:	133022
NCBI Accession:	NM_152402 , NP_689615
UniProt:	Q8N609

Application Details

Application Notes:	Optimal working dilutions should be determined experimentally by the investigator.
Comment:	Antigen size: 369 AA
Restrictions:	For Research Use only

Handling

Format:	Liquid
Concentration:	Lot specific
Buffer:	Liquid. Purified antibody supplied in 1x PBS buffer with 0.09 % (w/v) sodium azide and 2 % sucrose.
Preservative:	Sodium azide
Precaution of Use:	This product contains Sodium azide: a POISONOUS AND HAZARDOUS SUBSTANCE which should be handled by trained staff only.
Handling Advice:	Avoid repeated freeze-thaw cycles.
Storage:	-20 °C
Storage Comment:	For short term use, store at 2-8°C up to 1 week. For long term storage, store at -20°C in small aliquots to prevent freeze-thaw cycles.



Western Blotting				
Image	1.	WB	Suggested	Anti-TRAM1L1 Antibody
Titration: 0.2-1 ug/ml				
ELISA Titer: 1:312500				
Positive Control: Human Liver				