

Datasheet for ABIN2785166
anti-GRPEL2 antibody (Middle Region)[Go to Product page](#)

1 Image

Overview

Quantity:	100 µL
Target:	GRPEL2
Binding Specificity:	Middle Region
Reactivity:	Human, Mouse, Rat, Dog, Guinea Pig, Horse, Rabbit, Cow, Zebrafish (Danio rerio)
Host:	Rabbit
Clonality:	Polyclonal
Conjugate:	This GRPEL2 antibody is un-conjugated
Application:	Western Blotting (WB)

Product Details

Immunogen:	The immunogen is a synthetic peptide directed towards the middle region of human GRPEL2
Sequence:	HEHELICHVP AGVGVQPGTV ALVRQDGYKL HGRTIRLARV EVAVESQRRRL
Predicted Reactivity:	Cow: 93%, Dog: 100%, Guinea Pig: 100%, Horse: 100%, Human: 100%, Mouse: 100%, Rabbit: 100%, Rat: 100%, Zebrafish: 79%
Characteristics:	This is a rabbit polyclonal antibody against GRPEL2. It was validated on Western Blot using a cell lysate as a positive control.
Purification:	Affinity Purified

Target Details

Target:	GRPEL2
---------	--------

Target Details

Alternative Name:	GRPEL2 (GRPEL2 Products)
Background:	<p>GRPEL2 is an essential component of the PAM complex, a complex required for the translocation of transit peptide-containing proteins from the inner membrane into the mitochondrial matrix in an ATP-dependent manner. GRPEL2 seems to control the nucleotide-dependent binding of mitochondrial HSP70 to substrate proteins. GRPEL2 stimulates ATPase activity of mt-HSP70. GRPEL2 may also serve to modulate the interconversion of oligomeric (inactive) and monomeric (active) forms of mt-HSP70.</p> <p>Alias Symbols: DKFZp451C205, FLJ23713, FLJ33918, Mt-GrpE#2</p> <p>Protein Interaction Partner: ELAVL1, UBC, HSPA4,</p> <p>Protein Size: 225</p>
Molecular Weight:	25 kDa
Gene ID:	134266
NCBI Accession:	NM_152407 , NP_689620
UniProt:	Q8TAA5

Application Details

Application Notes:	Optimal working dilutions should be determined experimentally by the investigator.
Comment:	Antigen size: 225 AA
Restrictions:	For Research Use only

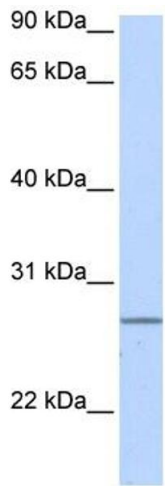
Handling

Format:	Liquid
Concentration:	Lot specific
Buffer:	Liquid. Purified antibody supplied in 1x PBS buffer with 0.09 % (w/v) sodium azide and 2 % sucrose.
Preservative:	Sodium azide
Precaution of Use:	This product contains Sodium azide: a POISONOUS AND HAZARDOUS SUBSTANCE which should be handled by trained staff only.
Handling Advice:	Avoid repeated freeze-thaw cycles.
Storage:	-20 °C

Handling

Storage Comment: For short term use, store at 2-8°C up to 1 week. For long term storage, store at -20°C in small aliquots to prevent freeze-thaw cycles.

Images



Western Blotting

Image 1. WB Suggested Anti-GRPEL2 Antibody Titration:

0.2-1 ug/ml

ELISA Titer: 1:312500

Positive Control: Human heart