



[Go to Product page](#)

Datasheet for ABIN2785175

## anti-RDH12 antibody (Middle Region)

1 Image

1 Publication

### Overview

Quantity:	100 µL
Target:	RDH12
Binding Specificity:	Middle Region
Reactivity:	Human, Pig, Rat, Dog
Host:	Rabbit
Clonality:	Polyclonal
Conjugate:	This RDH12 antibody is un-conjugated
Application:	Western Blotting (WB)

### Product Details

Immunogen:	The immunogen is a synthetic peptide directed towards the middle region of human RDH12
Sequence:	HIGKIPFHDL QSEKRYSRGF AYCHSKLANV LFTRELAKRL QGTGVTTYAV
Predicted Reactivity:	Dog: 93%, Human: 100%, Pig: 79%, Rat: 79%
Characteristics:	This is a rabbit polyclonal antibody against RDH12. It was validated on Western Blot using a cell lysate as a positive control.
Purification:	Affinity Purified

### Target Details

Target:	RDH12
Alternative Name:	RDH12 ( <a href="#">RDH12 Products</a> )

## Target Details

---

**Background:** RDH12 is an NADPH-dependent retinal reductase whose highest activity is toward 9-cis and all-trans-retinol. RDH12 also plays a role in the metabolism of short-chain aldehydes but does not exhibit steroid dehydrogenase activity. Defects in this gene are a cause of Leber congenital amaurosis type 3 (LCA3). The protein encoded by this gene is an NADPH-dependent retinal reductase whose highest activity is toward 9-cis and all-trans-retinol. The encoded enzyme also plays a role in the metabolism of short-chain aldehydes but does not exhibit steroid dehydrogenase activity. Defects in this gene are a cause of Leber congenital amaurosis type 3 (LCA3).

Alias Symbols: FLJ30273, LCA3, LCA13, SDR7C2

Protein Interaction Partner: RBPMS, UBC, ANXA8L1, MAP1LC3A, BUB1,

Protein Size: 316

---

**Molecular Weight:** 35 kDa

---

**Gene ID:** 145226

---

**NCBI Accession:** [NM\\_152443](#), [NP\\_689656](#)

---

**UniProt:** [Q96NR8](#)

## Application Details

---

**Application Notes:** Optimal working dilutions should be determined experimentally by the investigator.

---

**Comment:** Antigen size: 316 AA

---

**Restrictions:** For Research Use only

## Handling

---

**Format:** Liquid

---

**Concentration:** Lot specific

---

**Buffer:** Liquid. Purified antibody supplied in 1x PBS buffer with 0.09 % (w/v) sodium azide and 2 % sucrose.

---

**Preservative:** Sodium azide

---

**Precaution of Use:** This product contains Sodium azide: a POISONOUS AND HAZARDOUS SUBSTANCE which should be handled by trained staff only.

---

**Handling Advice:** Avoid repeated freeze-thaw cycles.

---

**Storage:** -20 °C

---

## Handling

---

Storage Comment: For short term use, store at 2-8°C up to 1 week. For long term storage, store at -20°C in small aliquots to prevent freeze-thaw cycles.

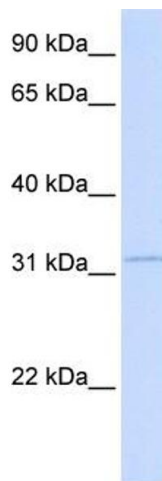
## Publications

---

Product cited in: Ewing, Chu, Elisma, Li, Taylor, Climie, McBroom-Cerajewski, Robinson, OConnor, Li, Taylor, Dharsee, Ho, Heilbut, Moore, Zhang, Ornatsky, Bukhman, Ethier, Sheng, Vasilescu, Abu-Farha, Lambert, Duewel et al.: "Large-scale mapping of human protein-protein interactions by mass spectrometry. ..." in: **Molecular systems biology**, Vol. 3, pp. 89, (2007) ([PubMed](#)).

## Images

---



### Western Blotting

#### Image 1. WB Suggested Anti-RDH12 Antibody Titration:

0.2-1 ug/ml

**ELISA Titer:** 1:312500

**Positive Control:** Transfected 293T