

Datasheet for ABIN2785176
anti-RDH12 antibody (Middle Region)[Go to Product page](#)

1 Image

Overview

Quantity:	100 µL
Target:	RDH12
Binding Specificity:	Middle Region
Reactivity:	Human, Pig, Rat, Dog, Guinea Pig, Rabbit, Cow, Horse, Saccharomyces cerevisiae, Zebrafish (Danio rerio)
Host:	Rabbit
Clonality:	Polyclonal
Conjugate:	This RDH12 antibody is un-conjugated
Application:	Western Blotting (WB)

Product Details

Immunogen:	The immunogen is a synthetic peptide directed towards the middle region of human RDH12
Sequence:	AKRLQGTGVT TYAVHPGVVR SELVRHSSL CLLWRLFSPF VKTAREGAQT
Predicted Reactivity:	Cow: 85%, Dog: 92%, Guinea Pig: 79%, Horse: 86%, Human: 100%, Pig: 86%, Rabbit: 85%, Rat: 79%, Yeast: 79%, Zebrafish: 92%
Characteristics:	This is a rabbit polyclonal antibody against RDH12. It was validated on Western Blot using a cell lysate as a positive control.
Purification:	Affinity Purified

Target Details

Target:	RDH12
---------	-------

Target Details

Alternative Name:	RDH12 (RDH12 Products)
Background:	<p>RDH12 is an NADPH-dependent retinal reductase whose highest activity is toward 9-cis and all-trans-retinol. RDH12 also plays a role in the metabolism of short-chain aldehydes but does not exhibit steroid dehydrogenase activity. Defects in this gene are a cause of Leber congenital amaurosis type 3 (LCA3). The protein encoded by this gene is an NADPH-dependent retinal reductase whose highest activity is toward 9-cis and all-trans-retinol. The encoded enzyme also plays a role in the metabolism of short-chain aldehydes but does not exhibit steroid dehydrogenase activity. Defects in this gene are a cause of Leber congenital amaurosis type 3 (LCA3).</p> <p>Alias Symbols: FLJ30273, LCA3, LCA13, SDR7C2</p> <p>Protein Interaction Partner: RBPMS, UBC, ANXA8L1, MAP1LC3A, BUB1,</p> <p>Protein Size: 316</p>
Molecular Weight:	35 kDa
Gene ID:	145226
NCBI Accession:	NM_152443 , NP_689656
UniProt:	Q96NR8

Application Details

Application Notes:	Optimal working dilutions should be determined experimentally by the investigator.
Comment:	Antigen size: 316 AA
Restrictions:	For Research Use only

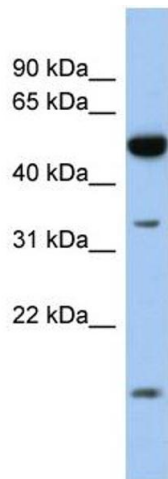
Handling

Format:	Liquid
Concentration:	Lot specific
Buffer:	Liquid. Purified antibody supplied in 1x PBS buffer with 0.09 % (w/v) sodium azide and 2 % sucrose.
Preservative:	Sodium azide
Precaution of Use:	This product contains Sodium azide: a POISONOUS AND HAZARDOUS SUBSTANCE which should be handled by trained staff only.
Handling Advice:	Avoid repeated freeze-thaw cycles.

Handling

Storage:	-20 °C
Storage Comment:	For short term use, store at 2-8°C up to 1 week. For long term storage, store at -20°C in small aliquots to prevent freeze-thaw cycles.

Images



Western Blotting

Image 1. WB Suggested Anti-RDH12 Antibody Titration:

0.2-1 ug/ml

ELISA Titer: 1:312500

Positive Control: Human Intestine