



[Go to Product page](#)

Datasheet for ABIN2785179
anti-LRFN5 antibody (Middle Region)

1 Image

Overview

Quantity:	100 µL
Target:	LRFN5
Binding Specificity:	Middle Region
Reactivity:	Human, Mouse, Rat, Rabbit, Cow, Dog, Guinea Pig, Horse, Zebrafish (Danio rerio)
Host:	Rabbit
Clonality:	Polyclonal
Conjugate:	This LRFN5 antibody is un-conjugated
Application:	Western Blotting (WB)

Product Details

Immunogen:	The immunogen is a synthetic peptide directed towards the middle region of human LRFN5
Sequence:	PLITRHTHEM RVLEGQRATL RCKARGDPEP AIHWISPEGK LISNATRSVLV
Predicted Reactivity:	Cow: 100%, Dog: 100%, Guinea Pig: 100%, Horse: 100%, Human: 100%, Mouse: 100%, Rabbit: 100%, Rat: 100%, Zebrafish: 77%
Characteristics:	This is a rabbit polyclonal antibody against LRFN5. It was validated on Western Blot using a cell lysate as a positive control.
Purification:	Affinity Purified

Target Details

Target:	LRFN5
---------	-------

Target Details

Alternative Name: LRFN5 ([LRFN5 Products](#))

Background: The specific function of LRFN5 is not yet known.
Alias Symbols: C14orf146, DKFZp686G0210, FIGLER8, FLJ30803, SALM5
Protein Size: 719

Molecular Weight: 79 kDa

Gene ID: 145581

NCBI Accession: [NM_152447](#), [NP_689660](#)

UniProt: [Q96NI6](#)

Application Details

Application Notes: Optimal working dilutions should be determined experimentally by the investigator.

Comment: Antigen size: 719 AA

Restrictions: For Research Use only

Handling

Format: Liquid

Concentration: Lot specific

Buffer: Liquid. Purified antibody supplied in 1x PBS buffer with 0.09 % (w/v) sodium azide and 2 % sucrose.

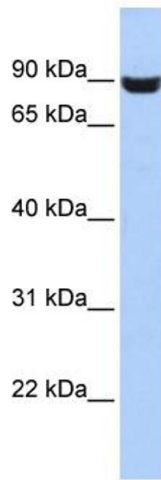
Preservative: Sodium azide

Precaution of Use: This product contains Sodium azide: a POISONOUS AND HAZARDOUS SUBSTANCE which should be handled by trained staff only.

Handling Advice: Avoid repeated freeze-thaw cycles.

Storage: -20 °C

Storage Comment: For short term use, store at 2-8°C up to 1 week. For long term storage, store at -20°C in small aliquots to prevent freeze-thaw cycles.



Western Blotting

Image 1. WB Suggested Anti-LRFN5 Antibody Titration:

0.2-1 ug/ml

ELISA Titer: 1:62500

Positive Control: HepG2 cell lysate