

Datasheet for ABIN2785183

anti-Crossover junction endonuclease EME1 (EME1) (N-Term) antibody



[Go to Product page](#)

1 Image

Overview

Quantity:	100 µL
Target:	Crossover junction endonuclease EME1 (EME1)
Binding Specificity:	N-Term
Reactivity:	Human, Mouse, Rat, Pig, Cow, Dog, Guinea Pig, Horse, Rabbit
Host:	Rabbit
Clonality:	Polyclonal
Conjugate:	Un-conjugated
Application:	Western Blotting (WB)

Product Details

Immunogen:	The immunogen is a synthetic peptide directed towards the N terminal region of human EME1
Sequence:	MALKKSSPSL DSGDSDSEEL PTFAFLKKEP SSTKRRQPER EEKIVVVDIS
Predicted Reactivity:	Cow: 85%, Dog: 93%, Guinea Pig: 92%, Horse: 86%, Human: 100%, Mouse: 100%, Pig: 100%, Rabbit: 86%, Rat: 93%
Characteristics:	This is a rabbit polyclonal antibody against EME1. It was validated on Western Blot using a cell lysate as a positive control.
Purification:	Affinity Purified

Target Details

Target:	Crossover junction endonuclease EME1 (EME1)
---------	---

Target Details

Alternative Name:	EME1 (EME1 Products)
Background:	<p>EME1 and MUS81 (MIM 606591) form an endonuclease complex that cleaves branched DNA structures, especially those arising during stalled DNA replication. EME1 and MUS81 (MIM 606591) form an endonuclease complex that cleaves branched DNA structures, especially those arising during stalled DNA replication (Abraham et al., 2003 [PubMed 14609959]). [supplied by OMIM].</p> <p>Alias Symbols: FLJ31364, MMS4L, SLX2A</p> <p>Protein Interaction Partner: vpr, MUS81, APP, SLX1A, EME1, SLX4, SUMO2, SLX1B,</p> <p>Protein Size: 570</p>
Molecular Weight:	63 kDa
Gene ID:	146956
NCBI Accession:	NM_152463 , NP_689676
UniProt:	Q96AY2

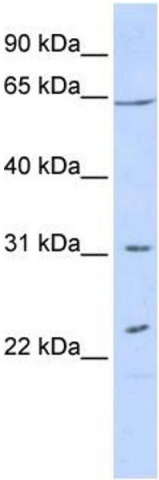
Application Details

Application Notes:	Optimal working dilutions should be determined experimentally by the investigator.
Comment:	Antigen size: 570 AA
Restrictions:	For Research Use only

Handling

Format:	Liquid
Concentration:	Lot specific
Buffer:	Liquid. Purified antibody supplied in 1x PBS buffer with 0.09 % (w/v) sodium azide and 2 % sucrose.
Preservative:	Sodium azide
Precaution of Use:	This product contains Sodium azide: a POISONOUS AND HAZARDOUS SUBSTANCE which should be handled by trained staff only.
Handling Advice:	Avoid repeated freeze-thaw cycles.
Storage:	-20 °C
Storage Comment:	For short term use, store at 2-8°C up to 1 week. For long term storage, store at -20°C in small

aliquots to prevent freeze-thaw cycles.



Western Blotting

Image 1. WB Suggested Anti-EME1 Antibody Titration:
0.2-1 ug/ml

ELISA Titer: 1:312500

Positive Control: 293T cell lysate