

Datasheet for ABIN2785187

**anti-C19orf18 antibody (N-Term)**[Go to Product page](#)**2** Images

## Overview

Quantity:	100 µL
Target:	C19orf18
Binding Specificity:	N-Term
Reactivity:	Human
Host:	Rabbit
Clonality:	Polyclonal
Conjugate:	This C19orf18 antibody is un-conjugated
Application:	Western Blotting (WB)

## Product Details

Immunogen:	The immunogen is a synthetic peptide directed towards the N terminal region of human C19orf18
Sequence:	NITGLPGSKR SQPPRNITKE PKVFFHKTQL PGIQGAASRS TAASPTNPMK
Predicted Reactivity:	Human: 100%
Characteristics:	This is a rabbit polyclonal antibody against C19orf18. It was validated on Western Blot.
Purification:	Affinity Purified

## Target Details

Target:	C19orf18
Alternative Name:	C19orf18 ( <a href="#">C19orf18 Products</a> )

## Target Details

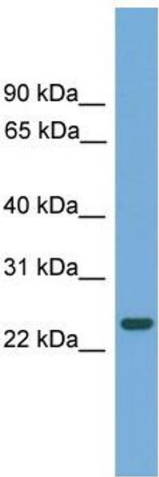
Background:	The function of this protein remains unknown. Alias Symbols: MGC41906 Protein Interaction Partner: APP, Protein Size: 215
Molecular Weight:	24 kDa
Gene ID:	147685
NCBI Accession:	<a href="#">NM_152474</a> , <a href="#">NP_689687</a>
UniProt:	<a href="#">Q8NEA5</a>

## Application Details

Application Notes:	Optimal working dilutions should be determined experimentally by the investigator.
Comment:	Antigen size: 215 AA
Restrictions:	For Research Use only

## Handling

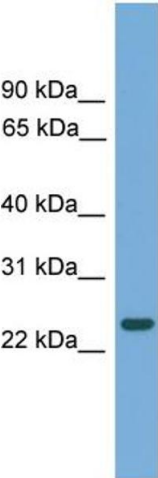
Format:	Liquid
Concentration:	Lot specific
Buffer:	Liquid. Purified antibody supplied in 1x PBS buffer with 0.09 % (w/v) sodium azide and 2 % sucrose.
Preservative:	Sodium azide
Precaution of Use:	This product contains Sodium azide: a POISONOUS AND HAZARDOUS SUBSTANCE which should be handled by trained staff only.
Handling Advice:	Avoid repeated freeze-thaw cycles.
Storage:	-20 °C
Storage Comment:	For short term use, store at 2-8°C up to 1 week. For long term storage, store at -20°C in small aliquots to prevent freeze-thaw cycles.



**Western Blotting**

**Image 1. WB Suggested Anti-C19orf18 Antibody Titration:**  
0.2-1 ug/ml

**Positive Control:** Human heart



Rabbit Anti-C19orf18 Antibody  
Catalog Number: ARP52994  
Lot Number: QC28722  
Lane: Fetal Heart Lysate

Antibody Titration: 1.0µg/ml  
Gel Concentration: 12%

**Western Blotting**

**Image 2. WB Suggested Anti-C19orf18**  
Antibody Titration: 0.2-1 µg/mL  
Positive Control: Human heart